



Lightweight Mini Hydraulic Unit

Features:

- ★ The frame is made of stainless steel square tube, which is light and firm;
- ★ It could be driven by compressed air or manual drive (optional), The output pressure can be smoothly adjusted by the driving air pressure through the regulator;
- ★ Simple operation, no heating, spark hazard;
- ★ The hydraulic part is made of stainless steel to prevent corrosion;
- ★ Applicable to hydraulic oil, water or other liquid media;
- ★ Automatically start pressurization after pressure drop, no need to consume gas flow to maintain pressure.

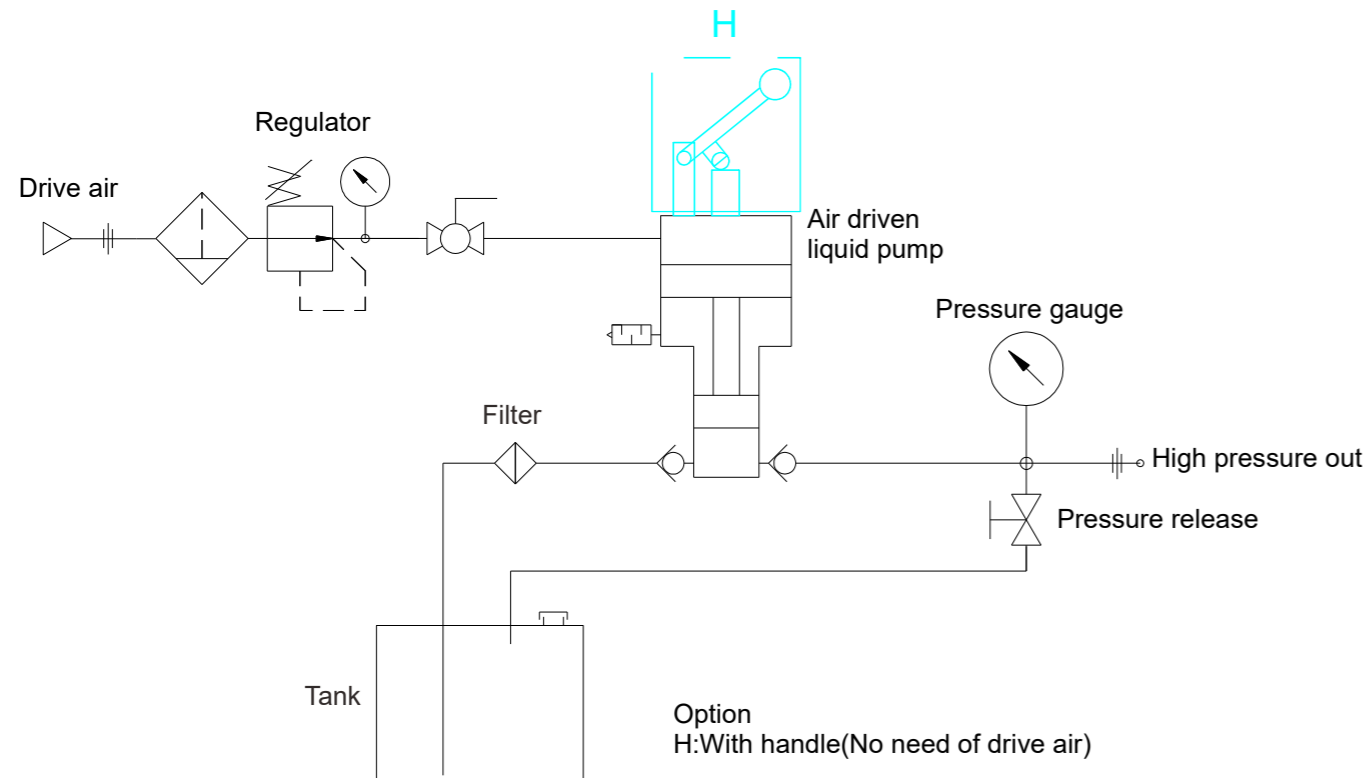
Description:

- ★ The air pressure range is 15psi~150psi, and the pressurization range is 625psi~25,000psi (the flow rate depends on different air pressure, which can be selected according to the type table behind);
- ★ Suitable for a variety of application scenarios, hydraulic tools, hose blasting test, test system pressure supply, leakage test, high pressure loading, railway wheel equivalence.



Construction&Dimension:

Piping diagram

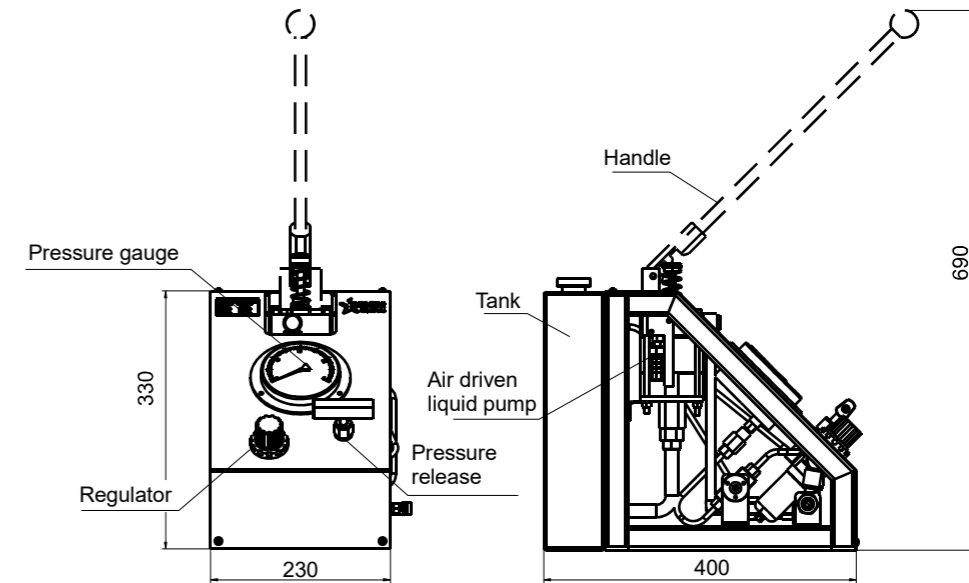


Tank volume	5L	Material of high pressure pump head	316SS
Seal material	PTFE&Buna.N	Work temperature	-40~250°F(40 ~120°C)Standard



Lightweight Mini Hydraulic Unit

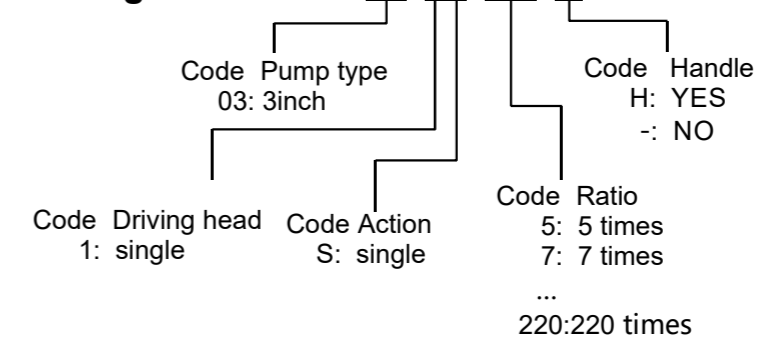
Construction



Unit: mm

Ordering Code:

Ordering Code: HPU03-1S-220-H



Code	Max. pressure(psi)	Max.flow rate(l/min)	Hydraulic outlet	Drive air inlet
HPU03-1S-5	625	8.3	1/2FNPT	G1/4
HPU03-1S-7	900	6	1/2FNPT	G1/4
HPU03-1S-12	1500	3.83	1/2FNPT	G1/4
HPU03-1S-21	2600	2.13	1/4FNPT	G1/4
HPU03-1S-36	4500	1.28	1/4FNPT	G1/4
HPU03-1S-71	8800	0.64	1/4FNPT	G1/4
HPU03-1S-110	13500	0.42	1/4FNPT	G1/4
HPU03-1S-188	15000	0.29	1/4HF	G1/4
HPU03-1S-220	25000	0.22	1/4HF	G1/4

1. 1psi=0.0689bar, 1l/min=0.264gallon/min;

2. Ordering codes listed are standard. Other sizes, materials and types are available upon request. For special requirements, please contact us.



Hand Pump Hydraulic Unit

Features:

- ★ The frame is made of stainless steel square tube, which is light and firm.
- ★ Manual drive, suitable for no air source, power supply and other non-power occasions;
- ★ Simple operation, no heating, spark hazard;
- ★ The hydraulic part is made of stainless steel to prevent corrosion.
- ★ Applicable to hydraulic oil, water or other liquid media.

Description:

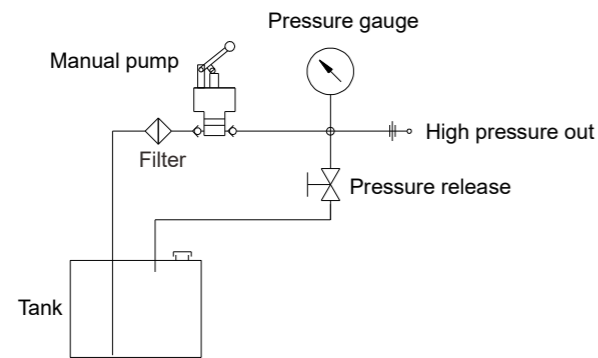
- ★ The pressurization range is 2,500psi~30,000psi;
- ★ In a double pump single output structure, the two outputs through the pipeline confluence, low pressure high flow, high pressure low flow, effectively improve the output efficiency; Double output structure is suitable for the situation that two channels need different pressure supply at the same time.
- ★ Suitable for a variety of applications, hydraulic tools, hose blasting test, test system pressure supply, leakage test, high pressure loading, railway wheel equivalence.



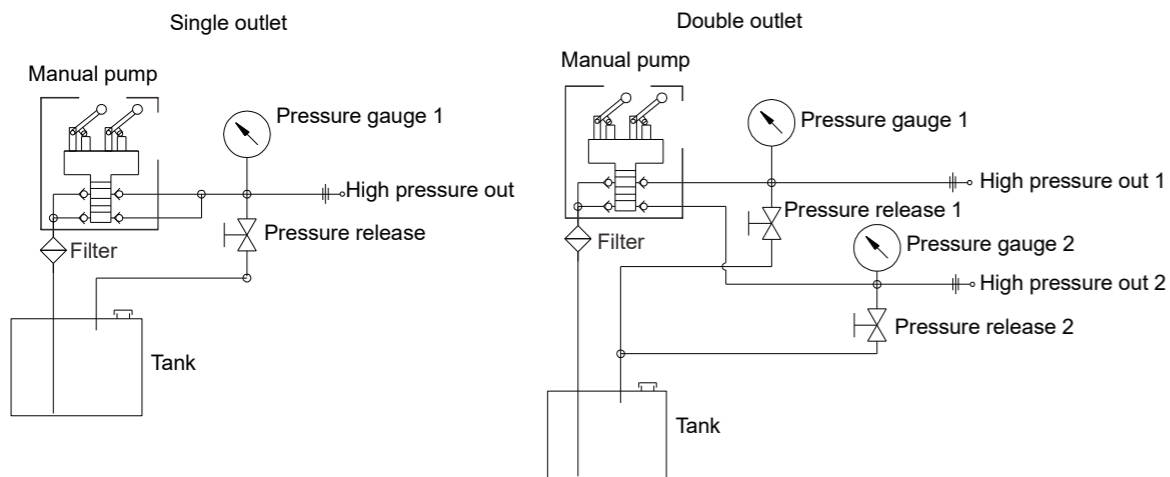
Construction&Dimension:

Piping diagram

Single pump



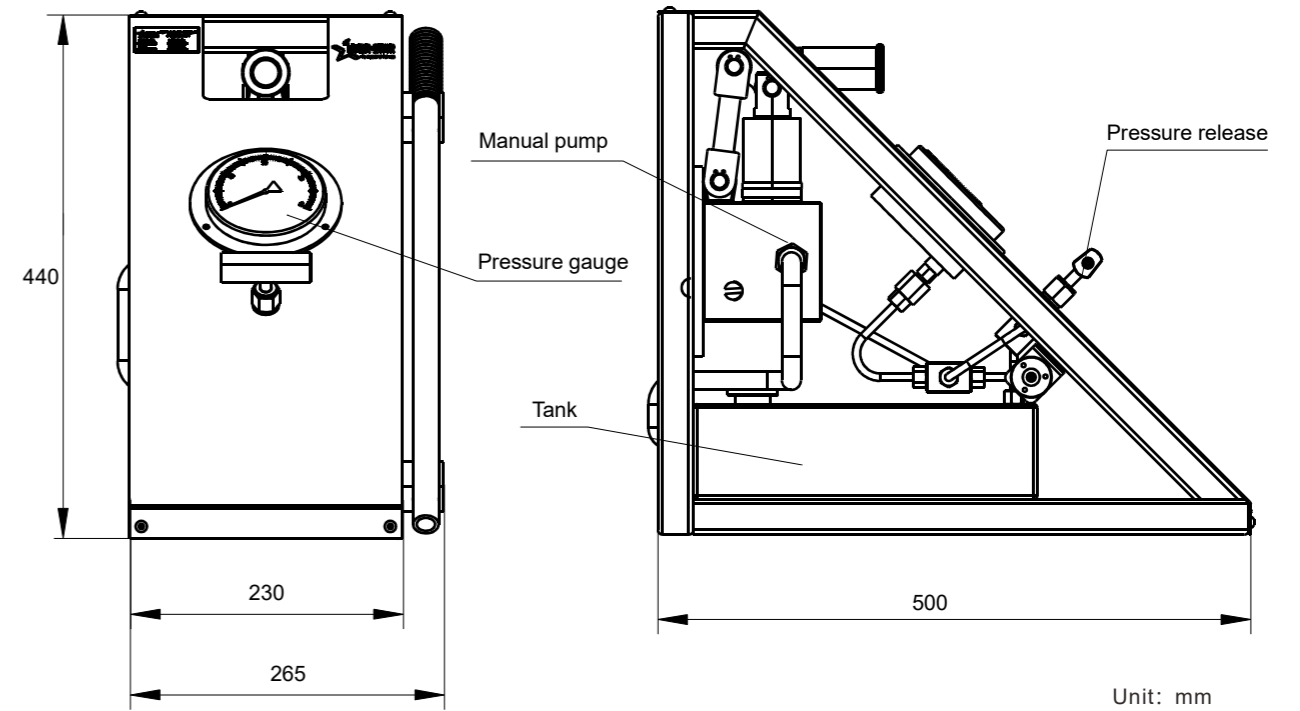
Double pump



Hand Pump Hydraulic Unit

Construction

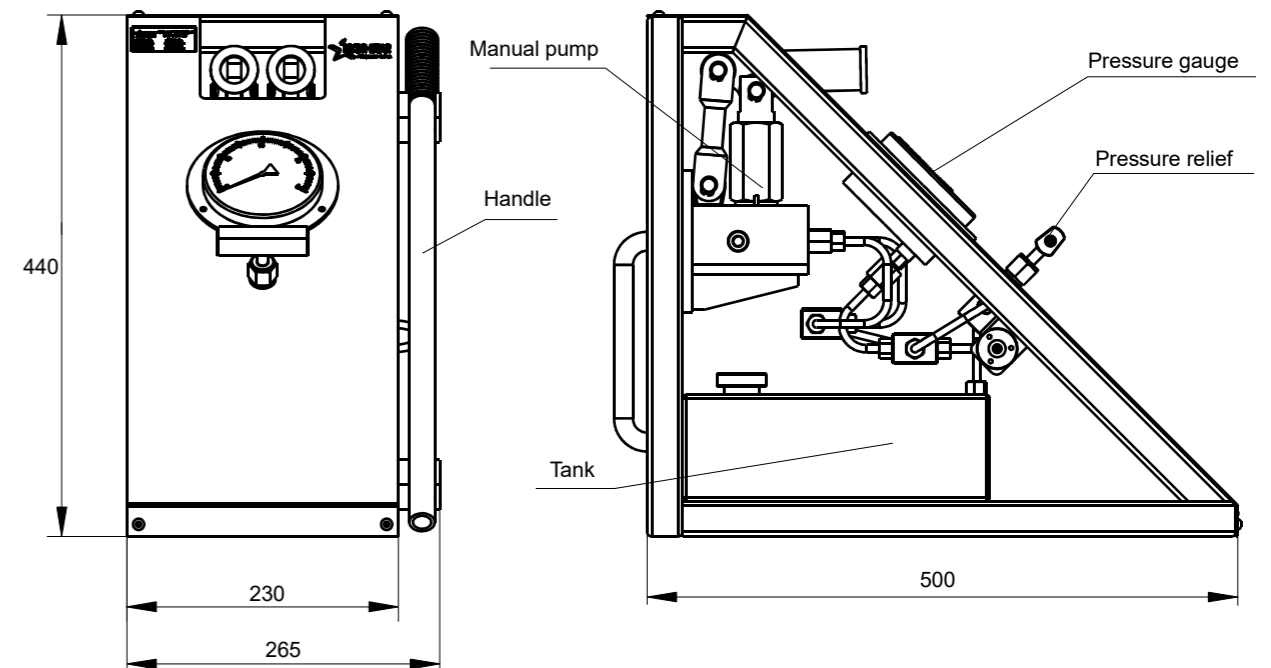
Single pump



Unit: mm

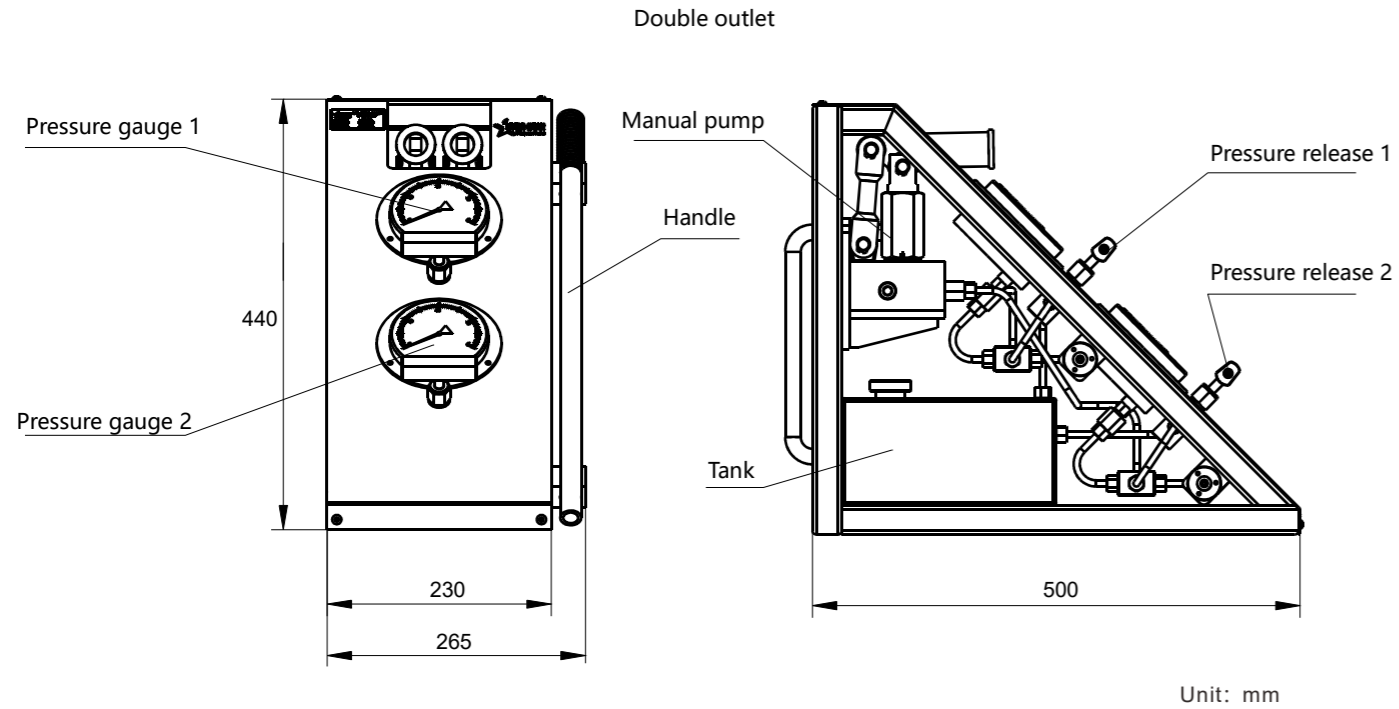
Double pump

Single outlet



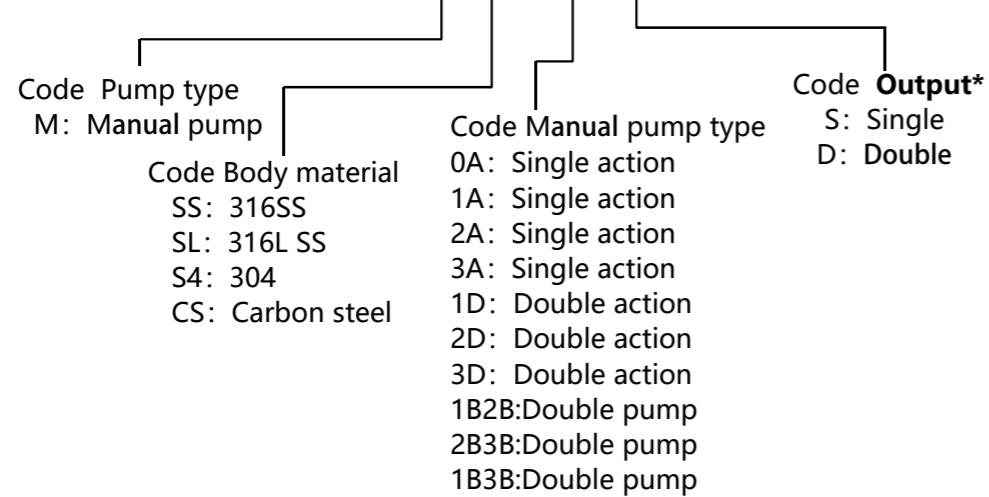
Unit: mm

Tank volume	5L	Material of high pressure pump head	17-4PH
Seal material	PTFE&Buna.N	Work temperature	-40~250°F(-40 ~120°C)Standard



Ordering Code:

Ordering Code : **HPUM-SS-1B2B-S**



Output * is a necessary option when choosing double pump. "S" is the option that two pumps are connected to the same output through pipelines, and "D" is the option that two pumps are connected to the output separately, There is no this option for single pump.

Type&Parameters:

Single pump

Code	Action	Max. pressure(psi)	Dis. flow rate(ml)	Hydraulic outlet
HPUM-SS-0A	Single action	20000	2.6	3/8FNPT
HPUM-SS-1A	Single action	10000	4.1	3/8FNPT
HPUM-SS-2A	Single action	5000	9.2	3/8FNPT
HPUM-SS-3A	Single action	2500	17.7	3/8FNPT
HPUM-SS-1D	Double Action	10000	2500psi under 9.2 2500psi up 4.1	3/8HF
HPUM-SS-2D	Double Action	20000	5000psi under 9.2 5000psi up 2.6	3/8HF
HPUM-SS-3D	Double Action	30000	2500psi under 9.2 2500psi up 1.7	3/8HF

Double pump

Code	Max. pressure(psi)		Dis. flow rate(ml)		Hydraulic outlet
	High pressure pump	Low pressure pump	High pressure pump	Low pressure pump	
HPUM-SS-1B2B	10000	5000	4.1	9.2	3/8HF
HPUM-SS-2B3B	5000	2500	9.2	17.7	3/8HF
HPUM-SS-1B3B	10000	2500	4.1	17.7	3/8HF

1. 1psi=0.0689bar, 1l/min=0.264gallon/min;

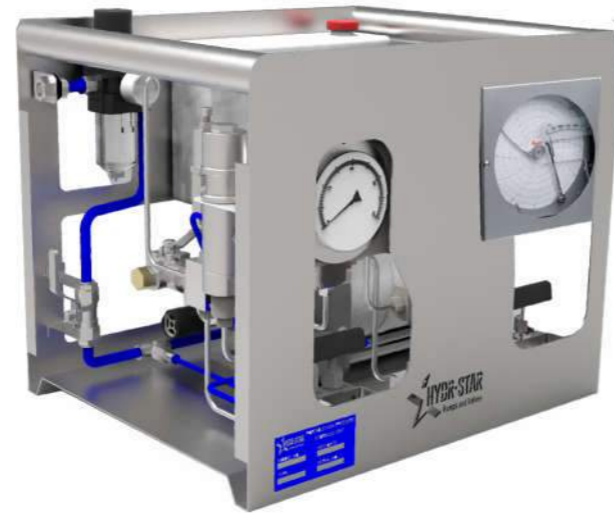
2. Ordering codes listed are standard. Other sizes, materials and types are available upon request. For special requirements, please contact us.



Portable High Pressure Unit

Features:

- ★ The frame is made of stainless steel plate, which is light and firm.
- ★ Driven by compressed air, the output pressure can be smoothly adjusted by the driving air pressure through the regulator;
- ★ Simple operation, no heating, spark hazard;
- ★ The hydraulic part is made of stainless steel to prevent corrosion.
- ★ Applicable to hydraulic oil, water or other liquid media;
- ★ Pressurization is automatically started after pressure drop, no need to consume gas flow to maintain pressure;
- ★ A variety of accessories are available, such as relief valve, oil tank, pressure sensor, recorder, etc.

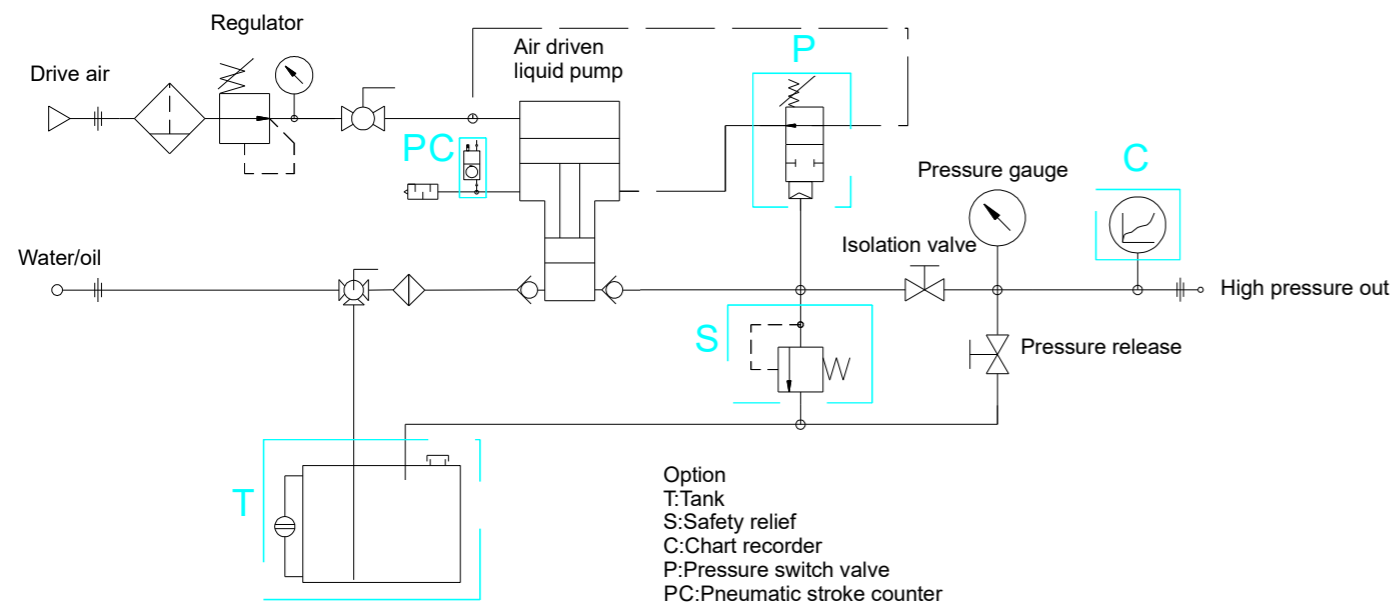


Description:

- ★ The drive air pressure range is 15psi~150psi, and the pressurization range is 1,600psi~100,000psi (the flow rate depends on different air pressure, which can be selected according to the type table behind);
- ★ Suitable for a variety of application scenarios, hydraulic tools, hose blasting test, test system pressure supply, leakage test, high pressure loading, railway wheel equivalence.

Construction&Dimension:

Piping diagram

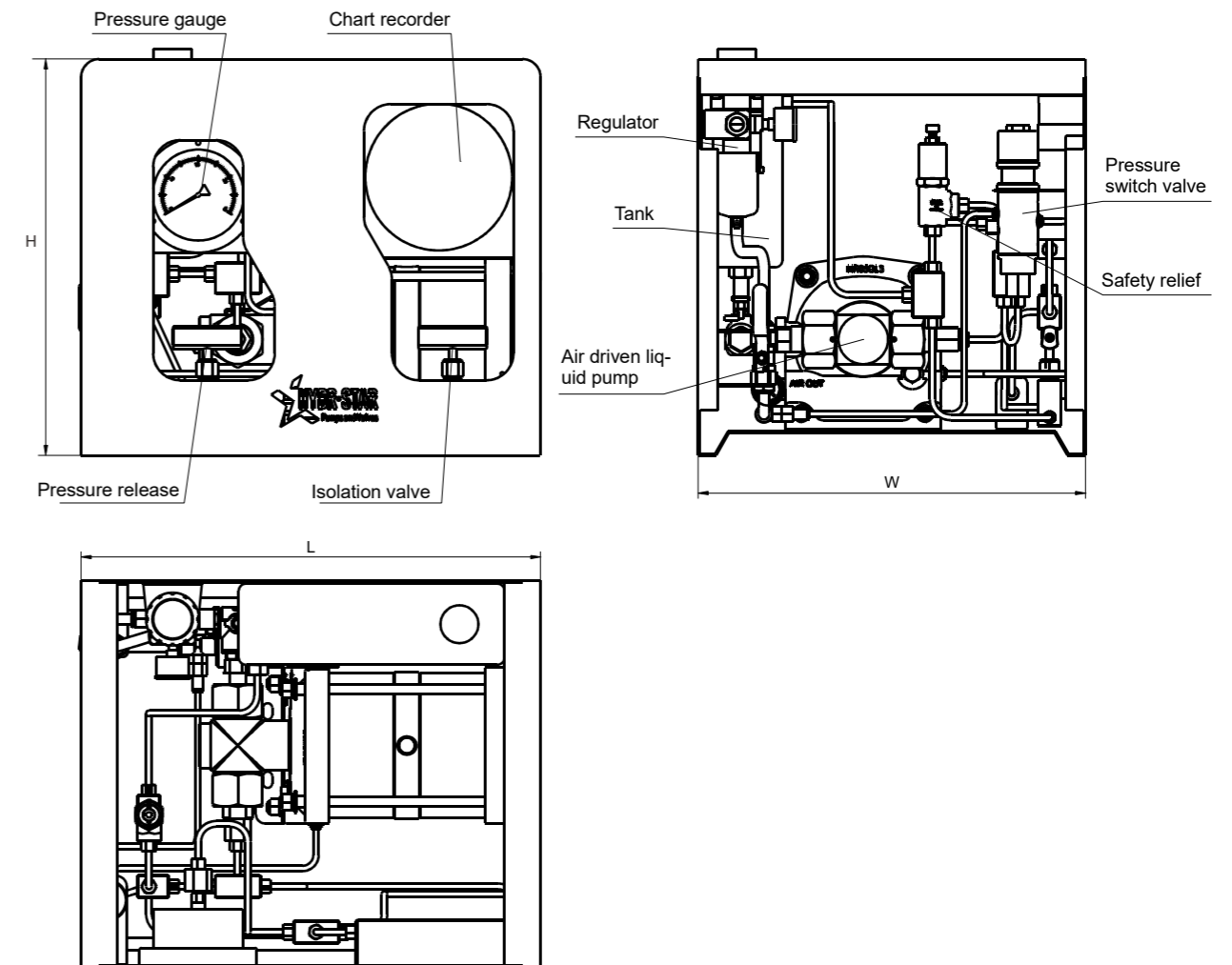


Drive air pressure	15~150psi	Material of high pressure pump head	17-4PH
Seal material	PTFE&Buna.N	Work temperature	-40~250°F(-40 ~120°C)Standard



Portable High Pressure Unit

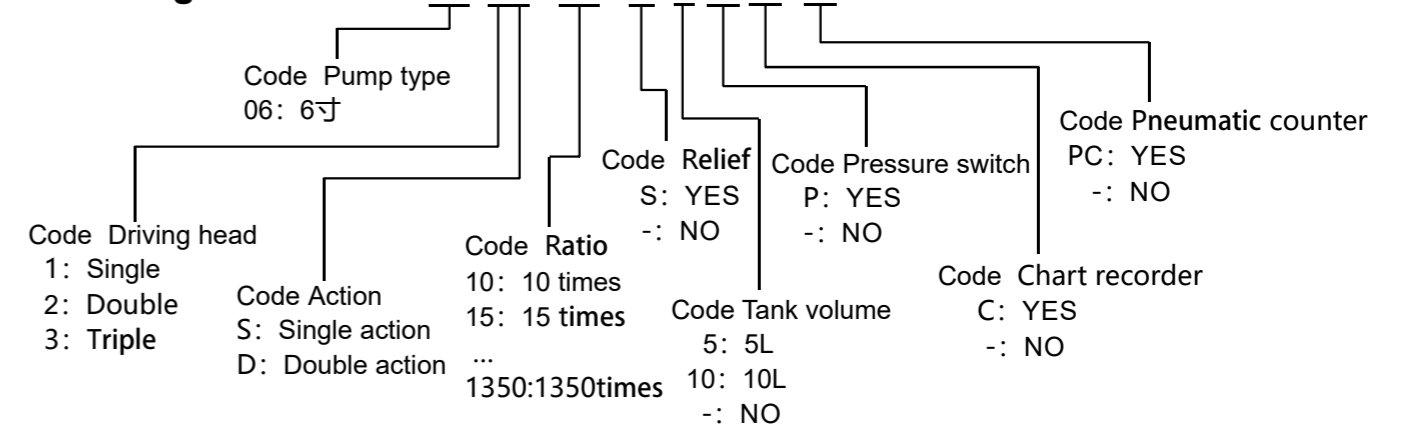
Construction



The size is shown in the model parameter selection table;

Ordering Code:

Ordering Code: HPU06-1S-100-S-5-P-C-PC





Portable High Pressure Unit

Type&Parameters:

Code	Max.pressure (psi)	Max.flow rate (l/min)	Hydraulic outlet	Drive air inlet	Diemension(mm)		
					L	H*	W
HPU06-1S-10	1600	19.9	1/2FNPT	G3/8	540	430	480
HPU06-1S-15	2400	13.3	1/2FNPT	G3/8	540	430	480
HPU06-1S-25	4000	8	1/2FNPT	G3/8	540	430	480
HPU06-1S-35	5700	5.7	1/2FNPT	G3/8	540	430	480
HPU06-1S-60	10000	3.3	1/2FNPT	G3/8	540	430	480
HPU06-1S-100	15000	2	1/2FNPT	G3/8	540	430	480
HPU06-1S-150	22500	1.3	1/4HF	G3/8	540	430	480
HPU06-1S-225	33750	0.7	1/4HF	G3/8	540	430	480
HPU06-1S-300	45000	0.5	1/4HF	G3/8	540	430	480
HPU06-1S-450	60000	0.3	1/4HF	G3/8	540	430	480
HPU06-2S-20	3200	19.9	1/2FNPT	G3/8	540	430	480
HPU06-2S-30	4800	13.3	1/2FNPT	G3/8	540	430	480
HPU06-2S-50	5000	8	1/2FNPT	G3/8	540	430	480
HPU06-2S-70	11000	5.7	1/2FNPT	G3/8	540	430	480
HPU06-2S-120	19000	3.3	1/2FNPT	G3/8	540	430	480
HPU06-2S-200	33000	1.5	1/4HF	G3/8	540	430	480
HPU06-2S-300	50000	1	1/4HF	G3/8	540	430	480
HPU06-2S-450	70000	0.7	1/4SF	G3/8	540	430	480
HPU06-2S-600	75000	0.5	1/4SF	G3/8	540	430	480
HPU06-3S-675	70000	0.41	1/4SF	G3/8	650	430	480
HPU06-3S-900	75000	0.33	1/4SF	G3/8	650	430	480
HPU06-3S-1350	100000	0.2	1/4SF	G3/8	650	430	480
HPU06-1D-10	1600	29.9	1/2FNPT	G3/8	540	430	480
HPU06-1D-15	2400	19.9	1/2FNPT	G3/8	540	430	480
HPU06-1D-25	4000	11.9	1/2FNPT	G3/8	540	430	480
HPU06-1D-35	5700	8.6	1/2FNPT	G3/8	540	430	480
HPU06-1D-60	10000	4.9	1/2FNPT	G3/8	540	430	480
HPU06-1D-100	16500	3	3/8MF	G3/8	540	430	480
HPU06-1D-150	22500	2	3/8MF	G3/8	540	430	480



Portable High Pressure Unit

Code	Max.pressure (psi)	Max.flow rate (l/min)	Hydraulic outlet	Drive air inlet	Diemension(mm)		
					L	H*	W
HPU06-1D-7L	1000	132	3/4FNPT	G3/8	650	430	480
HPU06-1D-12L	1850	82.1	3/4FNPT	G3/8	650	430	480
HPU06-1D-35L	4375	31	1/2FNPT	G3/8	650	430	480
HPU06-1D-60L	7500	18.1	1/2FNPT	G3/8	650	430	480
HPU06-1D-100L	10000	10.8	1/2FNPT	G3/8	650	430	480
HPU06-2D-70	11000	8.6	1/2FNPT	G3/8	650	430	480
HPU06-2D-120	19000	4.9	1/2FNPT	G3/8	650	430	480
HPU06-2D-200	33000	3	1/4HF	G3/8	650	430	480
HPU06-2D-300	50000	2	1/4HF	G3/8	650	430	480

1. H* is the height of the standard 5L oil tank. When 10L is selected, the height(H) is 480mm;

2. 1psi=0.0689bar, 1l/min=0.264gallon/min;

3. Ordering codes listed are standard. Other sizes, materials and types are available upon request.

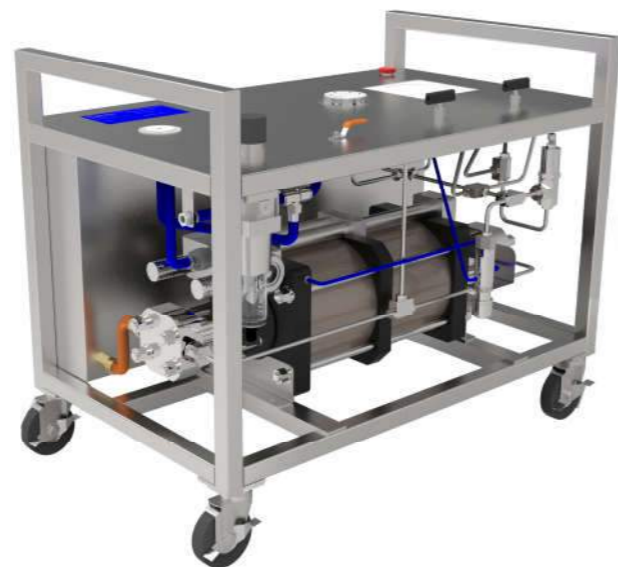
For special requirements, please contact us.



High Flow High Pressure Hydraulic Unit

Features:

- ★ The frame is made of stainless steel square tube, moved or fixed frame could be selected to make it convenient to use;
- ★ Driven by compressed air, the output pressure can be smoothly adjusted by the driving air pressure through the regulator;
- ★ Simple operation, no heating, spark hazard;
- ★ The hydraulic part is made of stainless steel to prevent corrosion;
- ★ Pressurization is automatically started after decompression, no need to consume gas flow to maintain pressure;
- ★ A variety of accessories are available, such as relief valve, oil tank, pressure switch, recorder, pneumatic stroke counter, etc.

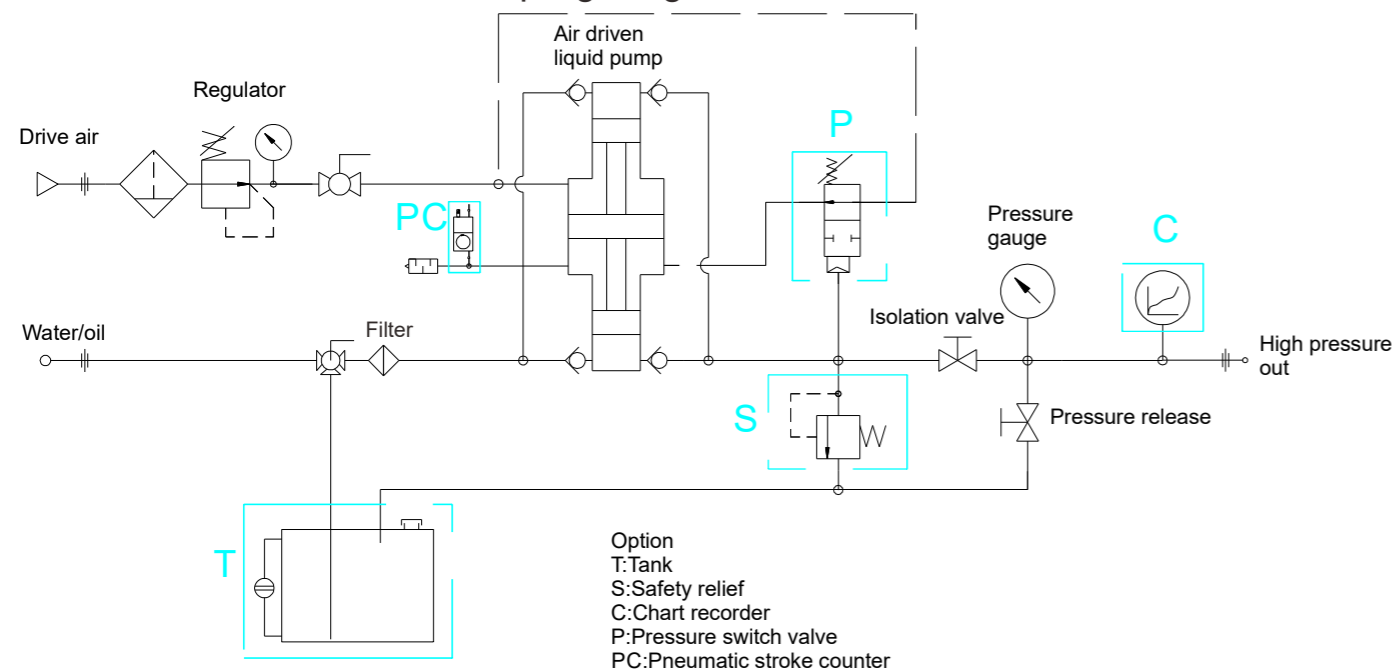


Description:

- ★ The drive air pressure range is 15psi~125psi, and the pressurization range is 3750psi~45000psi (the flow rate depends on different air pressure, which can be selected according to the type table behind).
- ★ Suitable for a variety of application scenarios, hydraulic tools, hose blasting test, test system pressure supply, leakage test, high pressure loading, railway wheel equivalence;

Construction&Dimension:

Piping diagram

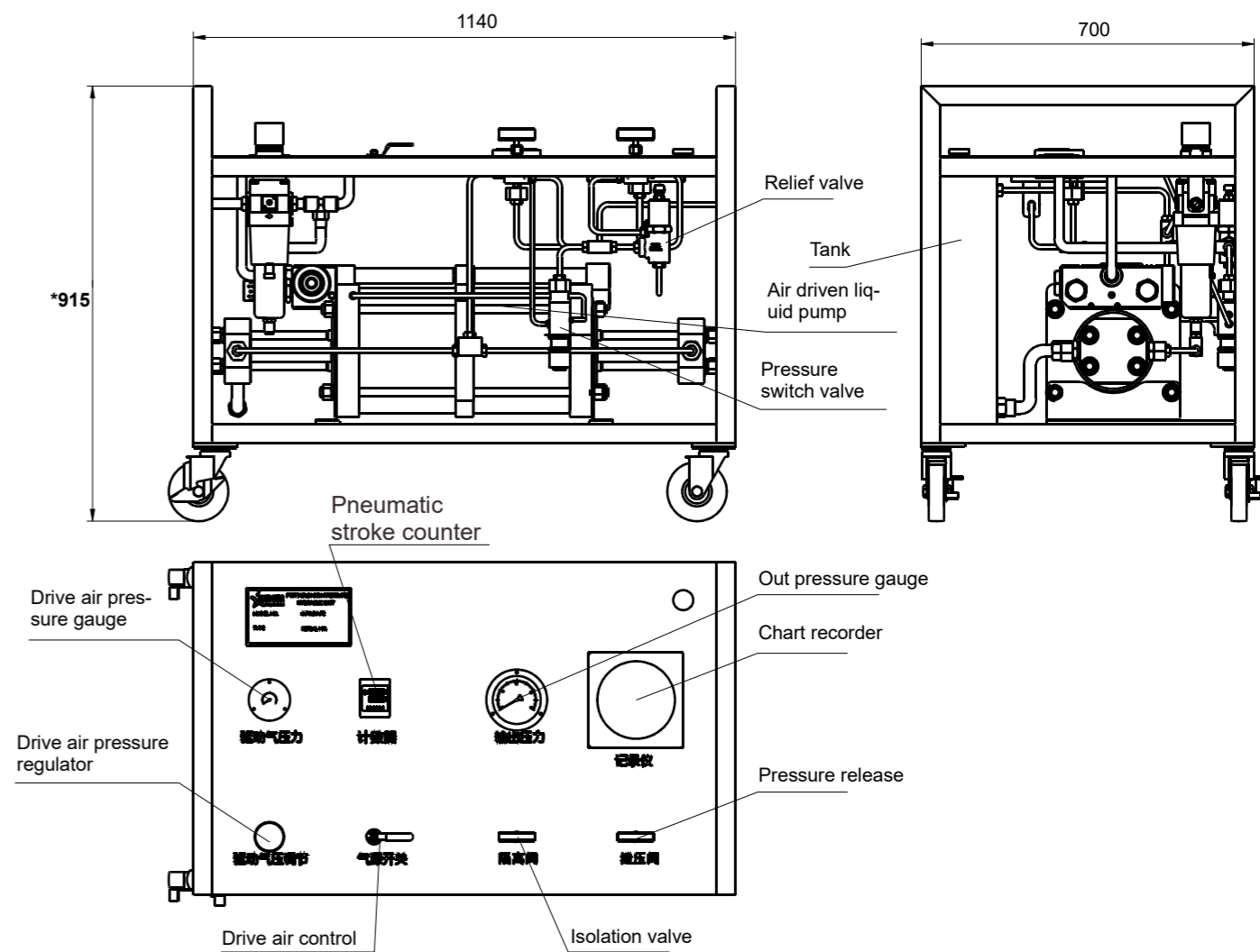


Drive air pressure	15~125psi	Material of high pressure pump head	17-4PH
Seal material	PTFE&Buna.N	Work temperature	-40~250°F(-40 ~120°C)Standard



High Flow High Pressure Hydraulic Unit

Construction

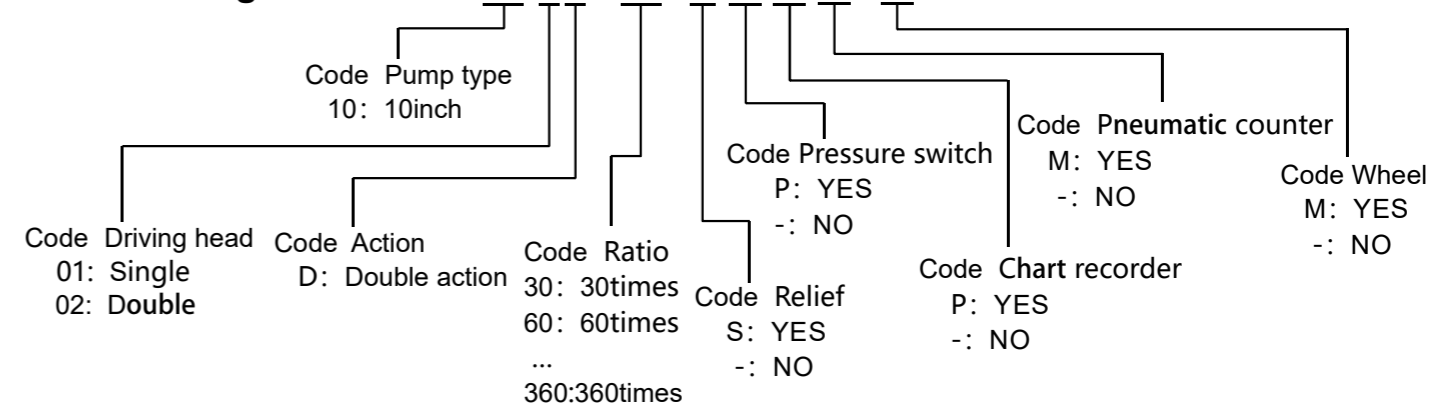


Unit: mm

Size *915 is the height with wheel, 800mm when no wheel are selected.

Ordering Code:

Ordering Code: HPU10-2D-120-S-P-C-PC-M





High Flow High Pressure Hydraulic Unit



Type&Parameters

Code	Max.pressure (psi)	Max.flow rate (l/min)	Hydraulic outlet	Drive air inlet
HPU10-1D-30	3750	52.5	3/4FNPT	1FNPT
HPU10-1D-60	7500	26.1	1/2FNPT	1FNPT
HPU10-1D-120	15000	12.7	9/16HF	1FNPT
HPU10-1D-180	22500	7.8	9/16HF	1FNPT
HPU10-1D-300	37500	4.7	9/16HF	1FNPT
HPU10-2D-60	7500	32.2	1/2FNPT	1FNPT
HPU10-2D-120	15000	16	9/16HF	1FNPT
HPU10-2D-240	30000	7.9	9/16HF	1FNPT
HPU10-2D-360	45000	4.9	9/16HF	1FNPT

1. 1psi=0.0689bar, 1l/min=0.264gallon/min;

2. Ordering codes listed are standard. Other sizes, materials and types are available upon request. For special requirements, please contact us.

Portable Mobile Hydraulic Unit

Features:

- ★ The frame is made of stainless steel square tube; moved or fixed frame could be selected to make it convenient to use;
- ★ Driven by compressed air, the output pressure can be smoothly adjusted by the driving air pressure through the regulator;
- ★ Simple operation, no heating, spark hazard;
- ★ The hydraulic part is made of stainless steel to prevent corrosion;
- ★ Pressurization is automatically started after decompression, no need to consume air flow to maintain pressure;
- ★ A variety of accessories are available, such as relief valve, pressure switch, recorder, pneumatic stroke counter, etc.

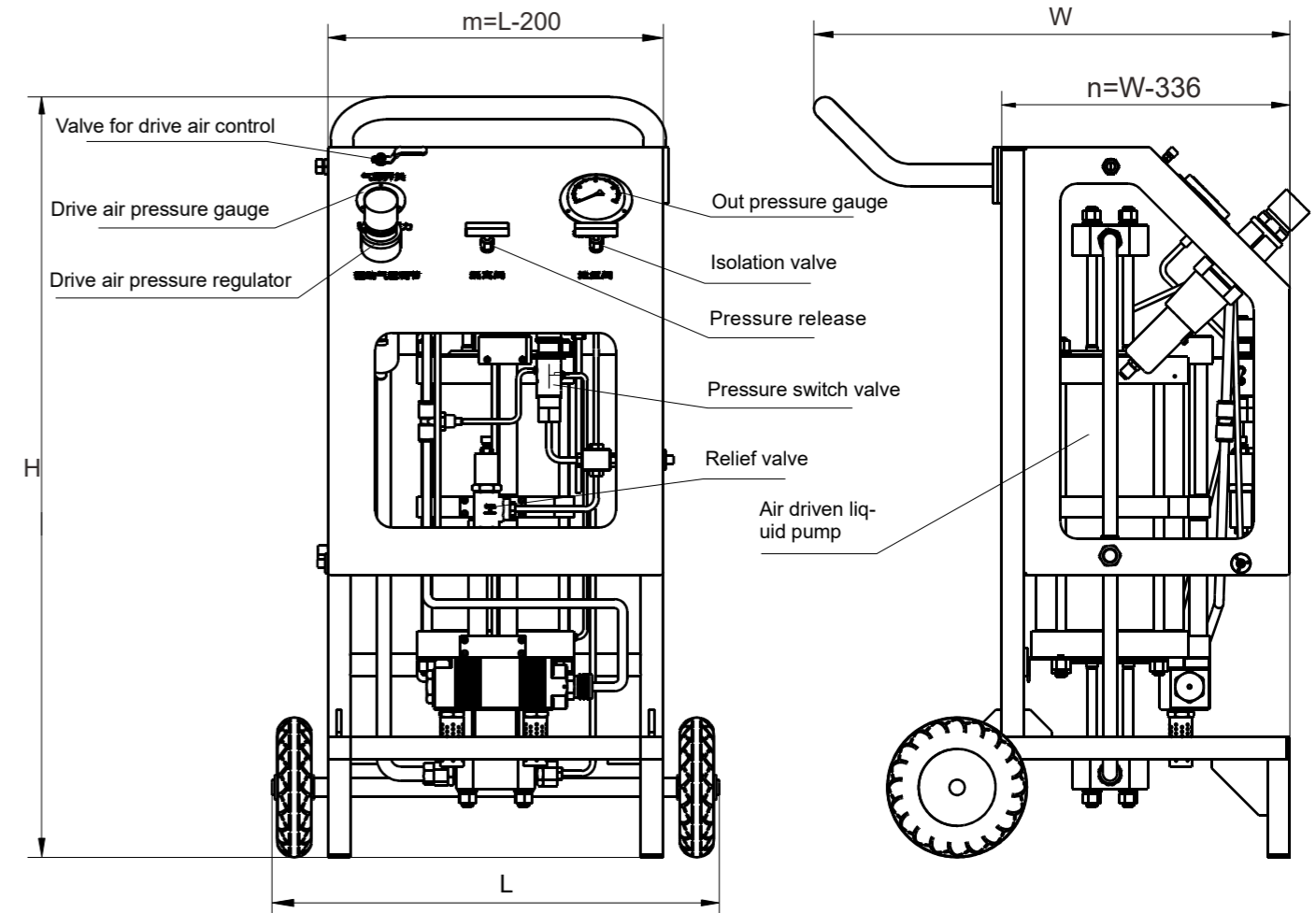
Description:

- ★ The drive air pressure range is 15psi~125psi, and the pressurization range is 1,600psi~100,000psi (the flow rate depends on different air pressure, which can be selected according to the type table behind).
- ★ Suitable for a variety of application scenarios, hydraulic tools, hose blasting test, test system pressure supply, leakage test, high pressure loading, railway wheel equivalence;

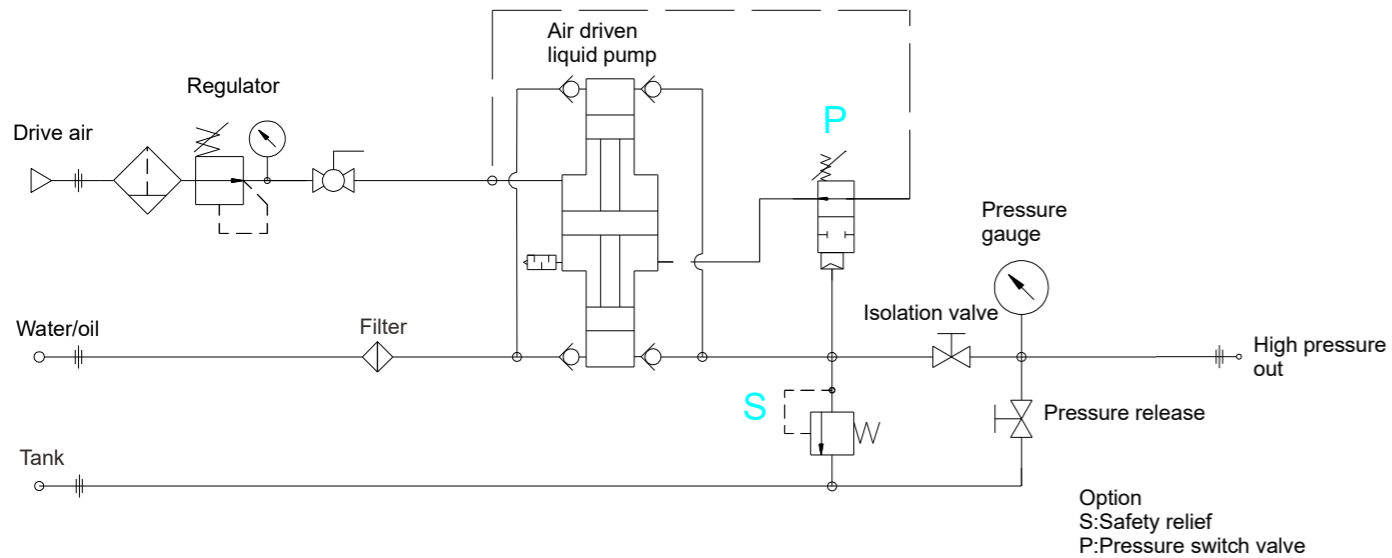
Construction&Dimension:



Construction



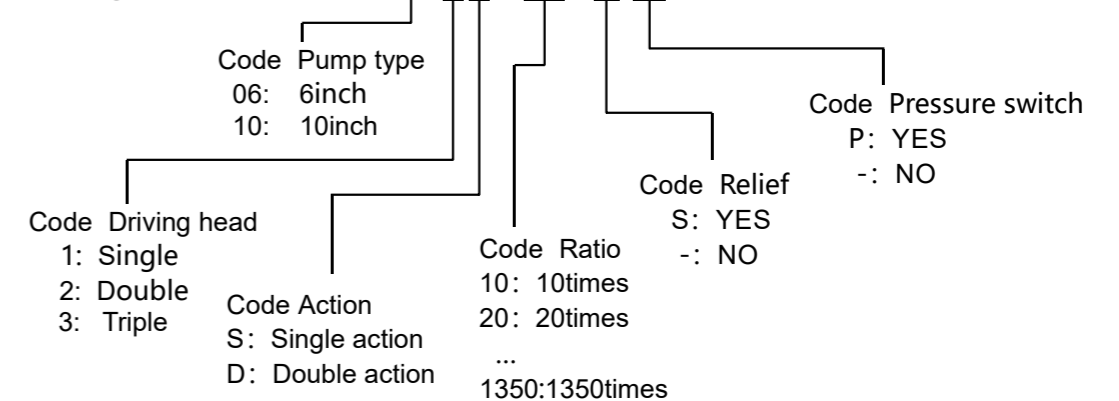
Piping diagram



The size is shown in the type selection table behind;

Ordering Code:

Ordering Code: MHPU10-2D-120-S-P





Portable Mobile Hydraulic Unit

Type&Parameters

Code	Max.pressure (psi)	Max.flow rate (l/min)	Hydraulic outlet	Drive air inlet	Diemension(mm)		
					L	H	W
MHPU06-1S-10	1600	19.9	1/2FNPT	G3/8	800	1100	686
MHPU06-1S-15	2400	13.3	1/2FNPT	G3/8	800	1100	686
MHPU06-1S-25	4000	8	1/2FNPT	G3/8	800	1100	686
MHPU06-1S-35	5700	5.7	1/2FNPT	G3/8	800	1100	686
MHPU06-1S-60	10000	3.3	1/2FNPT	G3/8	800	1100	686
MHPU06-1S-100	15000	2	1/2FNPT	G3/8	800	1100	686
MHPU06-1S-150	22500	1.3	1/4HF	G3/8	800	1100	686
MHPU06-1S-225	33750	0.7	1/4HF	G3/8	800	1100	686
MHPU06-1S-300	45000	0.5	1/4HF	G3/8	800	1100	686
MHPU06-1S-450	60000	0.3	1/4HF	G3/8	800	1100	686
MHPU06-2S-20	3200	19.9	1/2FNPT	G3/8	800	1100	686
MHPU06-2S-30	4800	13.3	1/2FNPT	G3/8	800	1100	686
MHPU06-2S-50	5000	8	1/2FNPT	G3/8	800	1100	686
MHPU06-2S-70	11000	5.7	1/2FNPT	G3/8	800	1100	686
MHPU06-2S-120	19000	3.3	1/2FNPT	G3/8	800	1100	686
MHPU06-2S-200	33000	1.5	1/4HF	G3/8	800	1100	686
MHPU06-2S-300	50000	1	1/4HF	G3/8	800	1100	686
MHPU06-2S-450	70000	0.7	1/4SF	G3/8	800	1100	686
MHPU06-2S-600	75000	0.5	1/4SF	G3/8	800	1100	686
MHPU06-3S-675	70000	0.41	1/4SF	G3/8	800	1100	686
MHPU06-3S-900	75000	0.33	1/4SF	G3/8	800	1100	686
MHPU06-3S-1350	100000	0.2	1/4SF	G3/8	800	1100	686
MHPU06-1D-10	1600	29.9	1/2FNPT	G3/8	800	1100	686
MHPU06-1D-15	2400	19.9	1/2FNPT	G3/8	800	1100	686
MHPU06-1D-25	4000	11.9	1/2FNPT	G3/8	800	1100	686
MHPU06-1D-35	5700	8.6	1/2FNPT	G3/8	800	1100	686
MHPU06-1D-60	10000	4.9	1/2FNPT	G3/8	800	1100	686
MHPU06-1D-100	16500	3	3/8MF	G3/8	800	1100	686
MHPU06-1D-150	22500	2	3/8MF	G3/8	800	1100	686



Portable Mobile Hydraulic Unit

Code	Max.pressure (psi)	Max.flow rate (l/min)	Hydraulic outlet	Drive air inlet	Diemension(mm)		
					L	H	W
MHPU06-1D-7L	1000	132	3/4FNPT	G3/8	800	1100	686
MHPU06-1D-12L	1850	82.1	3/4FNPT	G3/8	800	1100	686
MHPU06-1D-35L	4375	31	1/2FNPT	G3/8	800	1100	686
MHPU06-1D-60L	7500	18.1	1/2FNPT	G3/8	800	1100	686
MHPU06-1D-100L	10000	10.8	1/2FNPT	G3/8	800	1100	686
MHPU06-2D-70	11000	8.6	1/2FNPT	G3/8	800	1100	686
MHPU06-2D-120	19000	4.9	1/2FNPT	G3/8	800	1100	686
MHPU06-2D-200	33000	3	1/4HF	G3/8	800	1100	686
MHPU06-2D-300	50000	2	1/4HF	G3/8	800	1100	686
MHPU10-1D-30	3750	52.5	3/4FNPT	1FNPT	800	1240	800
MHPU10-1D-60	7500	26.1	1/2FNPT	1FNPT	800	1240	800
MHPU10-1D-120	15000	12.7	9/16HF	1FNPT	800	1240	800
MHPU10-1D-180	22500	7.8	9/16HF	1FNPT	800	1240	800
MHPU10-1D-300	37500	4.7	9/16HF	1FNPT	800	1240	800
MHPU10-2D-60	7500	32.2	1/2FNPT	1FNPT	800	1340	800
MHPU10-2D-120	15000	16	9/16HF	1FNPT	800	1340	800
MHPU10-2D-240	30000	7.9	9/16HF	1FNPT	800	1340	800
MHPU10-2D-360	45000	4.9	9/16HF	1FNPT	800	1340	800

1. 1psi=0.0689bar, 1l/min=0.264gallon/min;

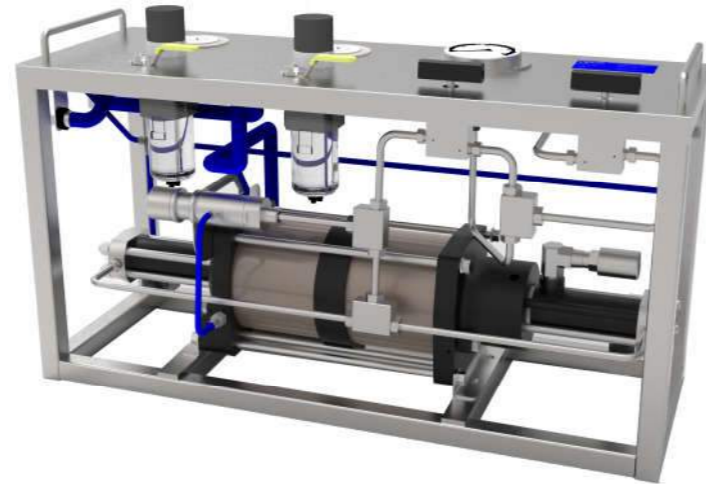
2. Ordering codes listed are standard. Other sizes, materials and types are available upon request. For special requirements, please contact us.



Gas Booster Unit

Features:

- ★ The frame is made of stainless steel square tube, which is light and firm.
- ★ Driven by compressed air, the output pressure can be smoothly adjusted by the driving air pressure through the regulator;
- ★ Simple operation, no heating, spark hazard;
- ★ Hold static pressure without generating heat or consuming power;
- ★ Optional accessories, such as pressure switch, casters, to be pressurized air inlet pressure regulator.

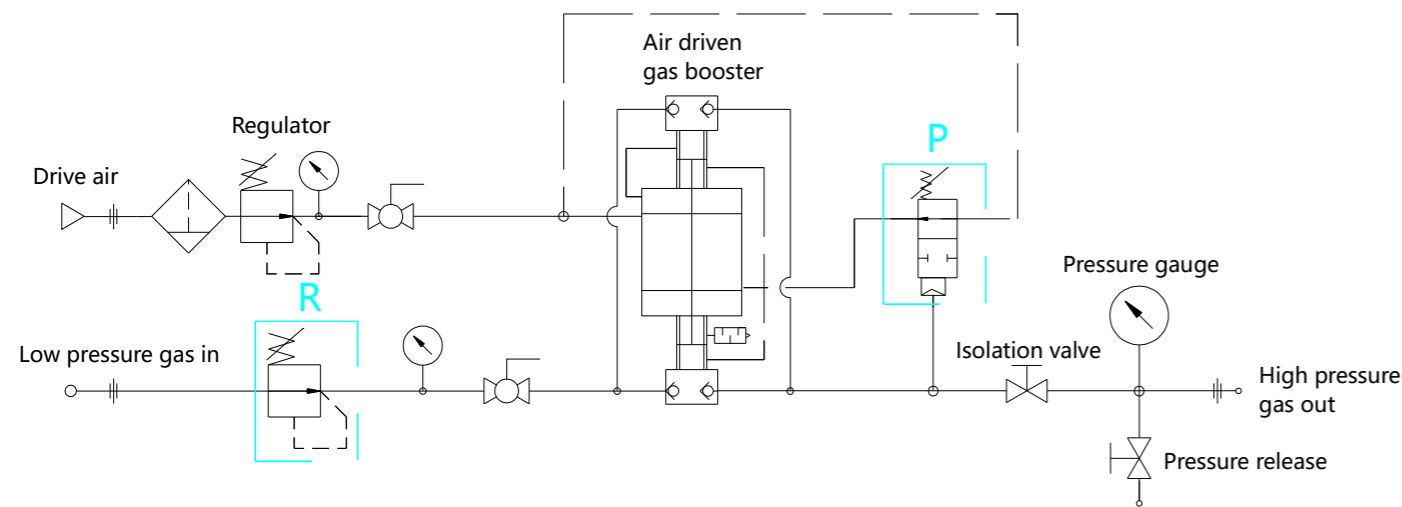


Description:

- ★ The drive air pressure range is 15psi~150psi, and the pressurization range is 1,050psi~39,000psi (the flow rate depends on different air pressure, which can be selected according to the type table behind).
- ★ Suitable for a variety of application scenarios, gas injection, respirator pressurization, test system pressure supply, leakage test, etc.

Construction&Dimension:

Piping diagram

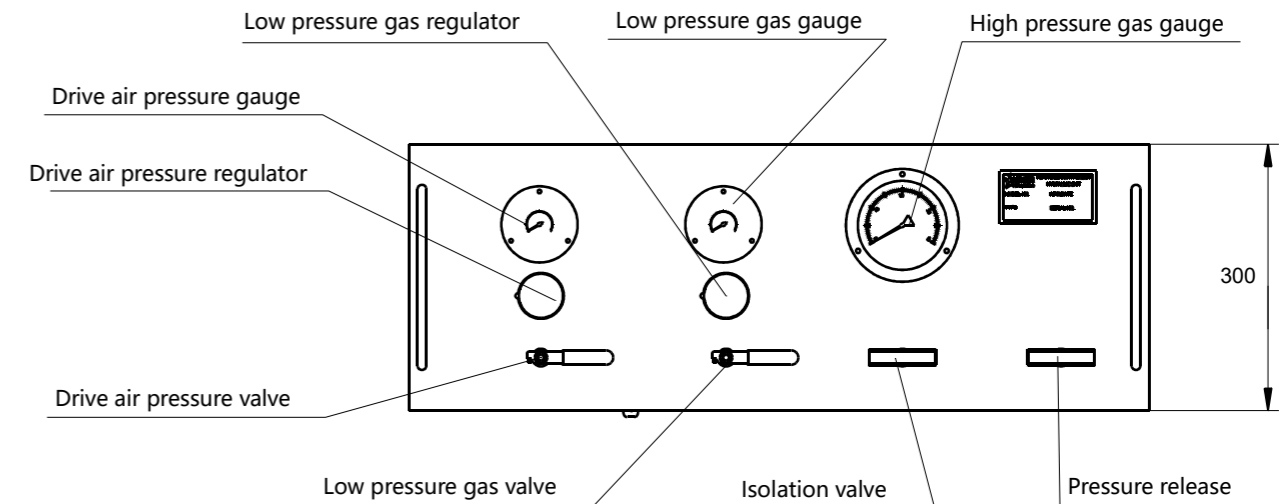
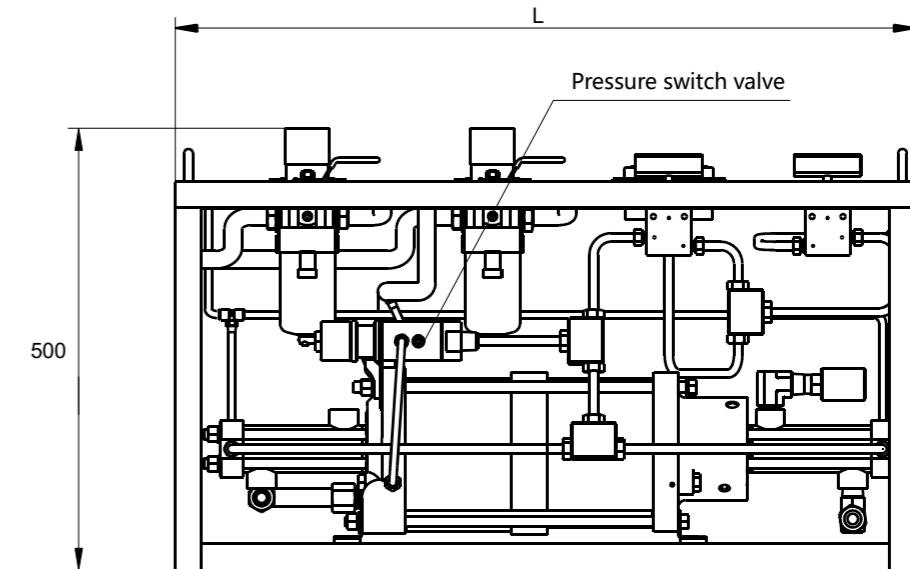


Option
R:Low pressure gas regulator
P:Pressure switch valve



Gas Booster Unit

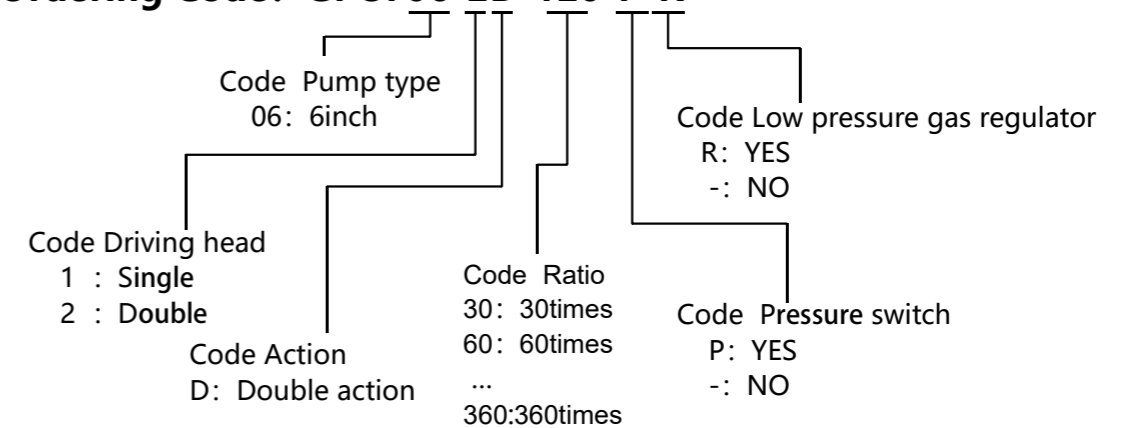
Construction



The size is shown in the type parameter selection table;

Ordering Code:

Ordering Code: GPUF06-2D-120-P-R





Gas Booster Unit

Type&Parameters:

Code	*Max.pressure (psi)	Min.low pressure gas pressure(psi)	Dis. flow rate(ml)	Low pressure gas inlet	High pressure gas outlet	Drive air inlet	Diemension L(mm)
GPUF06-1S-7	1050	25	216	3/8NPT	3/8NPT	3/4NPT	600
GPUF06-1S-15	2250	50	102	1/4 HF	1/4 HF	3/4NPT	600
GPUF06-1S-30	5400	100	51	1/4 HF	1/4 HF	3/4NPT	600
GPUF06-1S-50	7500	100	32	1/4 HF	1/4 HF	3/4NPT	600
GPUF06-1S-75	11250	250	20	1/4 HF	1/4 HF	3/4NPT	600
GPUF06-2S-60	9000	200	51	1/4 HF	1/4 HF	3/4NPT	700
GPUF06-2S-100	12000	100	32	1/4 HF	1/4 HF	3/4NPT	700
GPUF06-2S-150	20000	250	20	1/4 HF	1/4 HF	3/4NPT	700
GPUF06-1D-4	1250	15	316	3/8NPT	3/8NPT	3/4NPT	700
GPUF06-1D-7	2500	25	433	3/8NPT	3/8NPT	3/4NPT	700
GPUF06-1D-15	5000	50	203	1/4 HF	1/4 HF	3/4NPT	700
GPUF06-1D-30	9000	100	102	1/4 HF	1/4 HF	3/4NPT	700
GPUF06-1D-50	12000	100	64	1/4 HF	1/4 HF	3/4NPT	700
GPUF06-1D-75	15000	250	39	1/4 HF	1/4 HF	3/4NPT	700
GPUF06-2D-14	3000	25	405	1/4 HF	1/4 HF	3/4NPT	840
GPUF06-2D-30	5000	50	203	1/4 HF	1/4 HF	3/4NPT	840
GPUF06-2D-60	9000	200	102	1/4 HF	1/4 HF	3/4NPT	840
GPUF06-2D-100	15000	100	64	1/4 HF	1/4 HF	3/4NPT	840
GPUF06-2D-150	25000	250	39	1/4 HF	1/4 HF	3/4NPT	840
GPUF06-1T-4	1250	4	164	3/8NPT	3/8NPT	3/4NPT	700
GPUF06-1T-7/15	5000	25	216	3/8NPT	1/4 HF	3/4NPT	700
GPUF06-1T-7/30	9000	25	216	3/8NPT	1/4 HF	3/4NPT	700
GPUF06-1T-15/30	9000	50	102	1/4 HF	1/4 HF	3/4NPT	700
GPUF06-1T-15/50	15000	50	102	1/4 HF	1/4 HF	3/4NPT	700
GPUF06-1T-15/75	15000	100	102	1/4 HF	1/4 HF	3/4NPT	700
GPUF06-1T-30/50	15000	100	51	1/4 HF	1/4 HF	3/4NPT	700
GPUF06-1T-30/75	15000	100	51	1/4 HF	1/4 HF	3/4NPT	700
GPUF06-2T-14/30	5000	25	216	3/8NPT	1/4 HF	3/4NPT	840
GPUF06-2T-14/60	9000	25	216	1/4 HF	1/4 HF	3/4NPT	840
GPUF06-2T-30/60	9000	100	102	1/4 HF	1/4 HF	3/4NPT	840
GPUF06-2T-30/100	15000	100	102	1/4 HF	1/4 HF	3/4NPT	840
GPUF06-2T-30/150	15000	100	102	1/4 HF	1/4 HF	3/4NPT	840
GPUF06-2T-60/100	15000	100	39	1/4 HF	1/4 HF	3/4NPT	840
GPUF06-2T-60/150	20000	100	39	1/4 HF	1/4 HF	3/4NPT	840



Gas Booster Unit

1. 1psi=0.0689bar, 1l/min=0.264gallon/min;

2. Ordering codes listed are standard. Other sizes, materials and types are available upon request. For special requirements, please contact us.



Gas Booster Unit

Features:

- ★ The frame is made of stainless steel square tube, moved or fixed frame could be selected to make it convenient to use.
- ★ Driven by compressed air, the output pressure can be smoothly adjusted by the driving air pressure through the regulator;
- ★ Simple operation, no heating, spark hazard;
- ★ Hold static pressure without generating heat or consuming power;
- ★ Optional accessories, such as pressure switch, casters, to be pressurized air inlet pressure regulator.

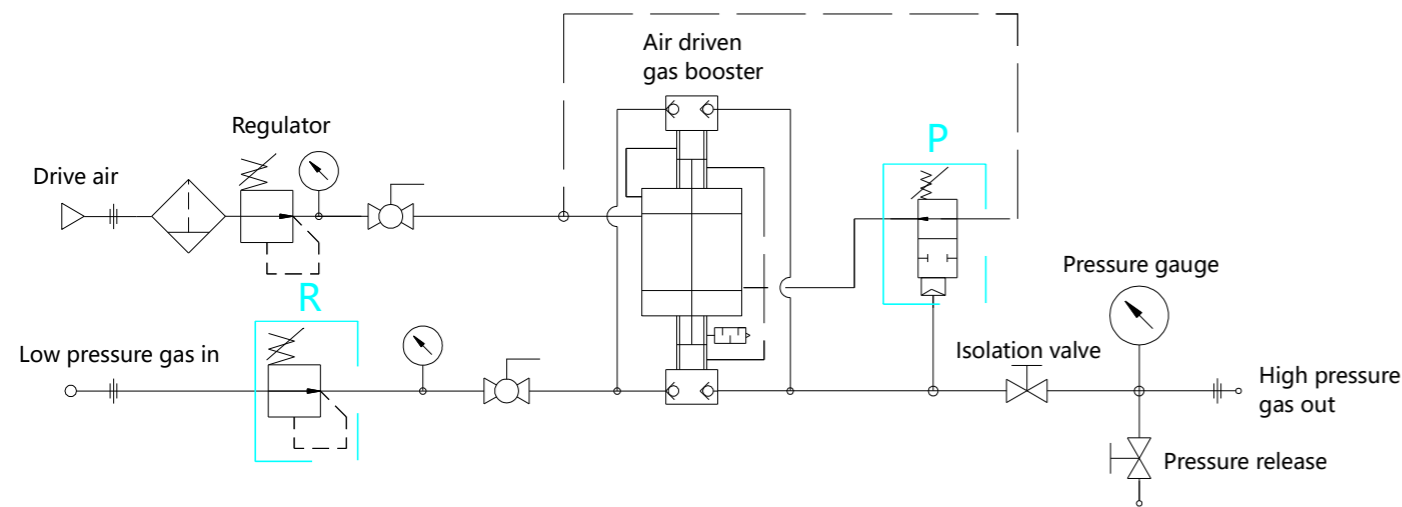


Description:

- ★ The drive air pressure range is 15psi~150psi, and the pressurization range is 1,050psi~39,000psi (the flow rate depends on different air pressure, which can be selected according to the type table behind).
- ★ Suitable for a variety of application scenarios, gas injection, respirator pressurization, test system pressure supply, leakage test, etc.

Construction&Dimension:

Piping diagram

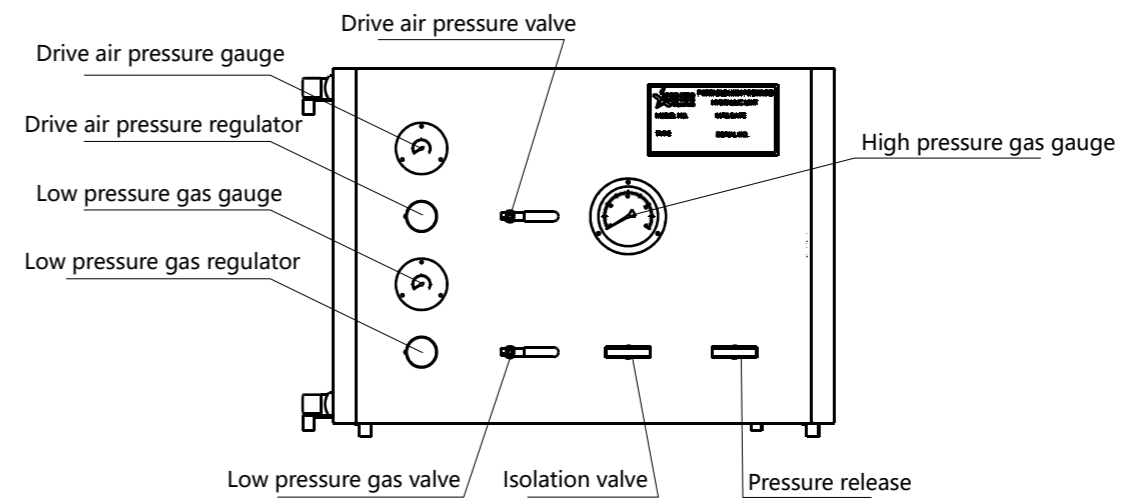
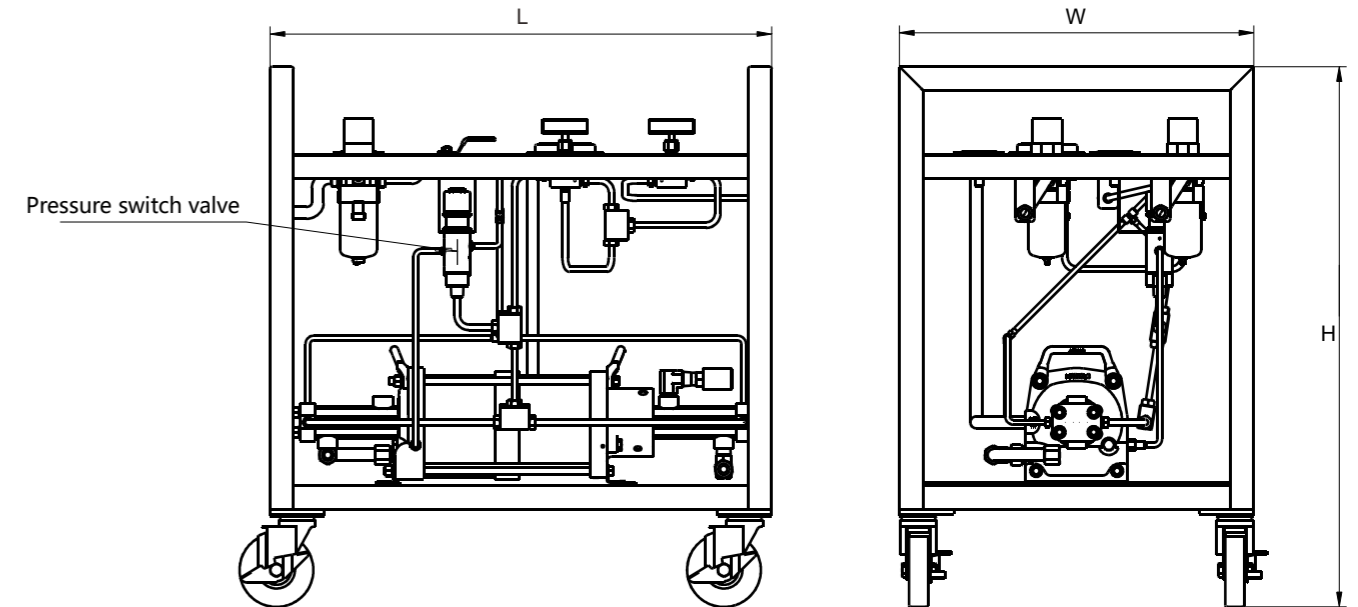


Option
R:Low pressure gas regulator
P:Pressure switch valve



Gas Booster Unit

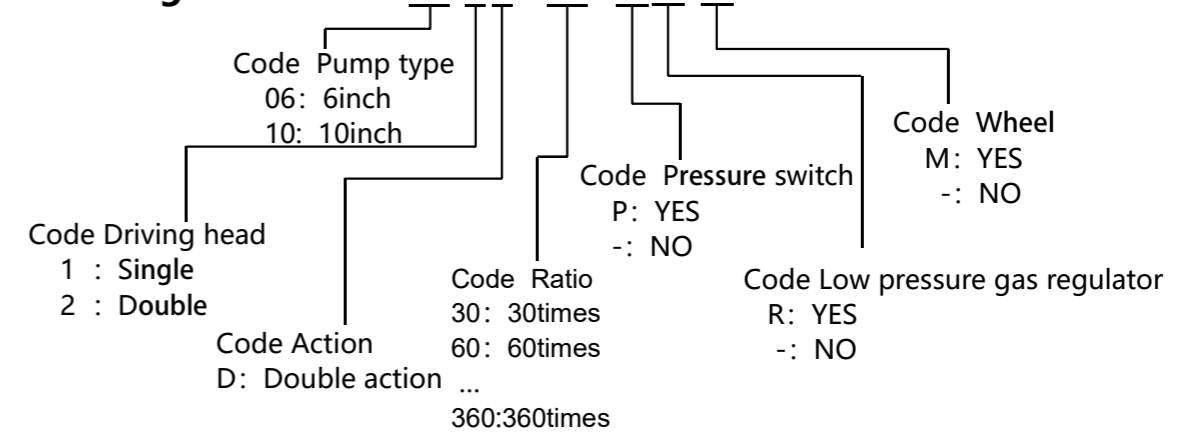
Construction



The size is shown in the type parameter selection table;

Ordering Code:

Ordering Code: GPU06-2D-120-P-R-M





Gas Booster Unit

Type&Parameters:

Code	*Max.pressure (psi)	Min.low pressure gas pressure(psi)	Dis. flow rate(ml)	Low pressure gas inlet	High pressure gas outlet	Drive air inlet	Diemension(mm)		
							L	H*	W
GPU06-2D-14	5000	25	405	1/4 HF	1/4 HF	3/4NPT	800	915	600
GPU06-2D-30	5000	50	203	1/4 HF	1/4 HF	3/4NPT	800	915	600
GPU06-2D-60	9000	200	102	1/4 HF	1/4 HF	3/4NPT	800	915	600
GPU06-2D-100	15000	100	64	1/4 HF	1/4 HF	3/4NPT	800	915	600
GPU06-2D-150	25000	250	39	1/4 HF	1/4 HF	3/4NPT	800	915	600
GPU06-1T-4	1250	4	164	3/8NPT	3/8NPT	3/4NPT	700	915	600
GPU06-1T-7/15	5000	25	216	3/8NPT	1/4 HF	3/4NPT	700	915	600
GPU06-1T-7/30	9000	25	216	3/8NPT	1/4 HF	3/4NPT	700	915	600
GPU06-1T-15/30	9000	50	102	1/4 HF	1/4 HF	3/4NPT	700	915	600
GPU06-1T-15/50	15000	50	102	1/4 HF	1/4 HF	3/4NPT	700	915	600
GPU06-1T-15/75	15000	100	102	1/4 HF	1/4 HF	3/4NPT	700	915	600
GPU06-1T-30/50	15000	100	51	1/4 HF	1/4 HF	3/4NPT	700	915	600
GPU06-1T-30/75	15000	100	51	1/4 HF	1/4 HF	3/4NPT	700	915	600
GPU06-2T-14/30	5000	25	216	3/8NPT	1/4 HF	3/4NPT	800	915	600
GPU06-2T-14/60	9000	25	216	1/4 HF	1/4 HF	3/4NPT	800	915	600
GPU06-2T-30/60	9000	100	102	1/4 HF	1/4 HF	3/4NPT	800	915	600
GPU06-2T-30/100	15000	100	102	1/4 HF	1/4 HF	3/4NPT	800	915	600
GPU06-2T-30/150	15000	100	102	1/4 HF	1/4 HF	3/4NPT	800	915	600
GPU06-2T-60/100	15000	100	39	1/4 HF	1/4 HF	3/4NPT	800	915	600
GPU06-2T-60/150	20000	100	39	1/4 HF	1/4 HF	3/4NPT	800	915	600
GPU10-1D-14	5000	50	840	1/2NPT	1/2NPT	3/4NPT	800	915	600
GPU10-1D-30	7000	50	320	1/2NPT	3/8HF	3/4NPT	800	915	600
GPU10-1D-60	9000	50	180	3/8HF	3/8HF	3/4NPT	800	915	600
GPU10-1D-150	9000	50	73	3/8HF	3/8HF	3/4NPT	800	915	600
GPU10-2D-28	6000	25	840	1/2NPT	1/2NPT	3/4NPT	1060	915	600
GPU10-2D-60	12000	25	320	1/2NPT	3/8HF	3/4NPT	1060	915	600
GPU10-2D-120	20000	25	180	1/4NPT	3/8HF	3/4NPT	1060	915	600
GPU10-2D-300	39000	25	72	3/8HF	3/8HF	3/4NPT	1060	915	600
GPU10-1T-14/30	9000	25	840	1/2NPT	3/8HF	3/4NPT	800	915	600
GPU10-1T-14/60	20000	25	840	1/2NPT	3/8HF	3/4NPT	800	915	600
GPU10-1T-30/60	15000	25	320	1/2NPT	3/8HF	3/4NPT	800	915	600
GPU10-1T-30/150	25000	25	320	1/2NPT	3/8HF	3/4NPT	800	915	600



Gas Booster Unit

Code	*Max.pressure (psi)	Min.low pressure gas pressure(psi)	Dis. flow rate(ml)	Low pressure gas inlet	High pressure gas outlet	Drive air inlet	Diemension(mm)		
							L	H*	W
GPU10-1T-60/150	25000	25	180	3/8HF	3/8HF	3/4NPT	800	915	600
GPU10-2T-28/60	12000	25	840	1/2NPT	3/8HF	3/4NPT	1060	915	600
GPU10-2T-28/120	20000	25	840	1/2NPT	3/8HF	3/4NPT	1060	915	600
GPU10-2T-60/120	20000	25	320	1/2NPT	3/8HF	3/4NPT	1060	915	600
GPU10-2T-60/300	39000	25	320	1/2NPT	3/8HF	3/4NPT	1060	915	600

1. H* is the height of the standard type with wheel. No wheel type is selected, the height(H) is H=H*-115mm;
2. 1psi=0.0689bar, 1l/min=0.264gallon/min;
3. Ordering codes listed are standard. Other sizes, materials and types are available upon request. For special requirements, please contact us.