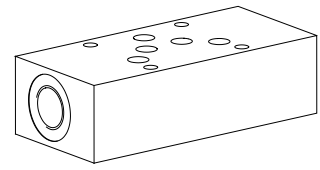


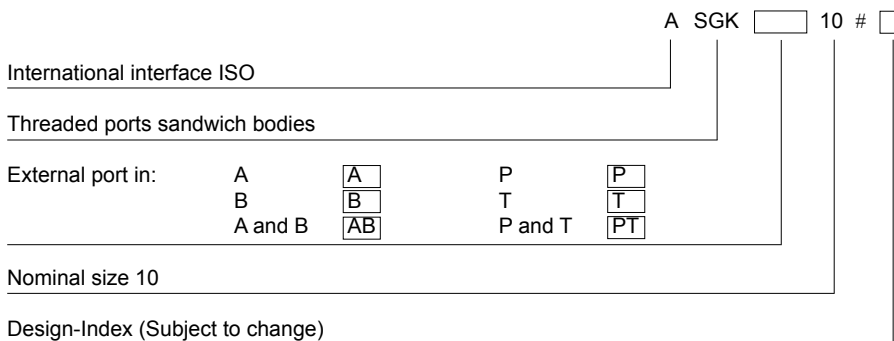
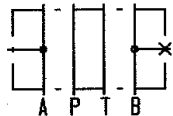
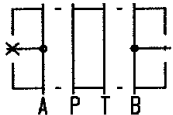
Threaded ports sandwich body

 • $p_{max} = 350 \text{ bar}$
NG10
 ISO 4401-05

DESCRIPTION

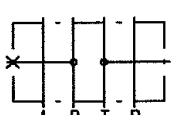
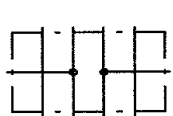
Sandwich bodies NG10 acc. to ISO 4401-05 with ports G1/2" for external connection to A and B or P and T lines. Sandwich bodies with one external connection (A, B, P, T) will have the second port plugged with plug G1/2" (article 238.5405). The sandwich bodies are phosphated and will be supplied inclusive 5 O-rings ID 14,00x1,78 (article 160.2140).

APPLICATION

Threaded ports sandwich bodies in stacking systems to connect gauges, sensors or control elements.

TYPE CODE

TYPES

 ASGKA10
 (article 203.4501)

 ASGKB10
 (article 203.4502)

 ASGKAB10
 (article 203.4500)

 ASGKPT10
 (article 203.4504)

 ASGKT10
 (article 203.4505)

 ASGKPT10
 (article 203.4503)

DIMENSIONS
