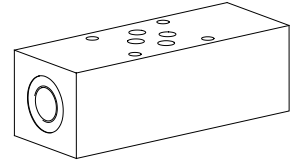


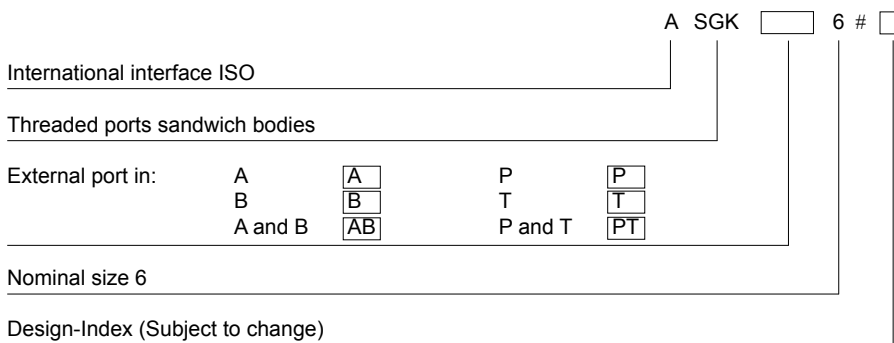
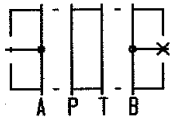
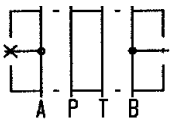
**Threaded ports sandwich body**

 •  $p_{max} = 350 \text{ bar}$ 
**NG6**  
 ISO 4401-03

**DESCRIPTION**

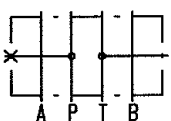
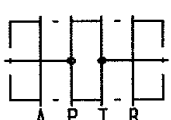
Sandwich bodies NG6 acc. to ISO 4401-03 with ports G3/8" for external connection to A and B or P and T lines. Sandwich bodies with one external connection (A, B, P, T) will have the second port plugged with plug G3/8" (article 238.3402). The sandwich bodies are phosphated and will be supplied inclusive 4 O-rings ID 9,25x1,78 (article 160.2093).

**APPLICATION**

Threaded ports sandwich bodies in stacking systems to connect gauges, sensors or control elements.

**TYPE CODE**

**TYPES**

 ASGKA6  
 (article 203.3501)

 ASGKB6  
 (article 203.3502)

 ASGKAB6  
 (article 203.3500)

 ASGKP6  
 (article 203.3504)

 ASGKT6  
 (article 203.3505)

 ASGKPT6  
 (article 203.3503)

**DIMENSIONS**
