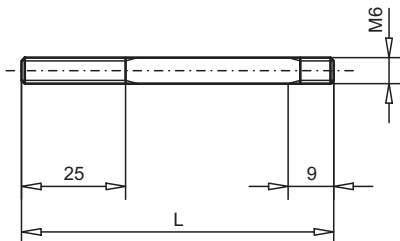


Stack assembly

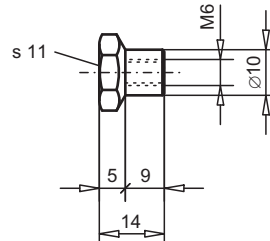
NG10

STUD M6xL



STEP NUT M6

Art. Nr. 154.7400



FIXATION WITH STUDS AND STEP NUTS

Effective stack length	Description and dimension (M6xL)	Fastening torque	Article No.
73 ... 89	Stud M6x106 ETG 100 black	9,5 Nm	224.3000
82 ... 96	Stud M6x115 ETG 100 black	9,5 Nm	224.3002
96 ... 112	Stud M6x129 ETG 100 black	9,5 Nm	224.3003
108 ... 124	Stud M6x141 ETG 100 black	9,5 Nm	224.3004
120 ... 136	Stud M6x153 ETG 100 black	9,5 Nm	224.3006
128 ... 144	Stud M6x161 ETG 100 black	9,5 Nm	224.3007
140 ... 156	Stud M6x173 ETG 100 black	9,5 Nm	224.3008
149 ... 165	Stud M6x182 ETG 100 black	9,5 Nm	224.3009
159 ... 175	Stud M6x192 ETG 100 black	9,5 Nm	224.3010
175 ... 191	Stud M6x205 ETG 100 black	9,5 Nm	224.3011
187 ... 203	Stud M6x220 ETG 100 black	9,5 Nm	224.3012
196 ... 212	Stud M6x229 ETG 100 black	9,5 Nm	224.3013
204 ... 220	Stud M6x237 ETG 100 black	9,5 Nm	224.3014
213 ... 229	Stud M6x246 ETG 100 black	9,5 Nm	224.3019
225 ... 241	Stud M6x258 ETG 100 black	9,5 Nm	224.3015
234 ... 250	Stud M6x267 ETG 100 black	9,5 Nm	224.3016
252 ... 268	Stud M6x285 ETG 100 black	9,5 Nm	224.3020
264 ... 280	Stud M6x297 ETG 100 black	9,5 Nm	224.3022
292 ... 308	Stud M6x325 ETG 100 black	9,5 Nm	224.3018
360 ... 378	Stud M6x393 ETG 100 black	9,5 Nm	224.3021
372 ... 388	Stud M6x405 ETG 100 black	9,5 Nm	224.3017

Effective stack length = Length between head of screw and top of base plate