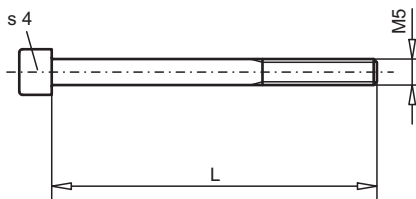
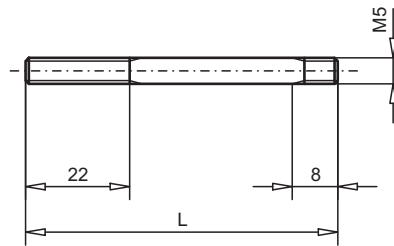
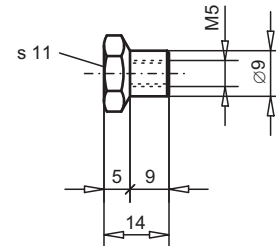


Stack assembly

NG4-Mini®
NG6
SOCKET HEAD CAP SCREW M5xL

STUD M5xL

STEP NUT M5


Art. Nr. 154.7402

FIXATION WITH SOCKET HEAD CAP SCREWS

Effective stack length	Description and dimension (M5xL)	Fastening torque	Article No.
41 ... 44	Cap screw M5x50 Steel 8.8 zinc coated DIN 912	5,2 Nm	246.2151
46 ... 49	Cap screw M5x55 Steel 8.8 zinc coated DIN 912	5,2 Nm	246.2156
51 ... 54	Cap screw M5x60 Steel 8.8 zinc coated DIN 912	5,2 Nm	246.2160
56 ... 59	Cap screw M5x65 Steel 12.9 black DIN 912	9,7 Nm	246.2365
61 ... 64	Cap screw M5x70 Steel 8.8 zinc coated DIN 912	5,2 Nm	246.2171
66 ... 69	Cap screw M5x75 Steel 8.8 zinc coated DIN 912	5,2 Nm	246.2176
69 ... 72	Cap screw M5x78 Steel 8.8 black	5,5 Nm	249.2003
71 ... 74	Cap screw M5x80 Steel 8.8 zinc coated DIN 912	5,2 Nm	246.2181
76 ... 79	Cap screw M5x85 Steel 12.9 black DIN 912	9,7 Nm	246.2385
79 ... 82	Cap screw M5x88 Steel 12.9 black	9,7 Nm	249.2006
81 ... 84	Cap screw M5x90 Steel 8.8 zinc coated DIN 912	5,2 Nm	246.2190
86 ... 89	Cap screw M5x95 Steel 12.9 black	9,7 Nm	249.2004
91 ... 94	Cap screw M5x100 Steel 12.9 black DIN 912	9,7 Nm	246.2391

FIXATION WITH STUDS AND STEP NUTS

Effective stack length	Description and dimension (M5xL)	Fastening torque	Article No.
83 ... 98	Stud M5x112 ETG 88 black	5,5 Nm	224.2016
89 ... 104	Stud M5x118 ETG 88 black	5,5 Nm	224.2025
95 ... 110	Stud M5x124 ETG 88 black	5,5 Nm	224.2001
106 ... 121	Stud M5x135 ETG 88 black	5,5 Nm	224.2023
113 ... 128	Stud M5x142 ETG 88 black	5,5 Nm	224.2002
124 ... 140	Stud M5x154 ETG 88 black	5,5 Nm	224.2003
136 ... 151	Stud M5x165 ETG 88 black	5,5 Nm	224.2013
143 ... 158	Stud M5x172 ETG 88 black	5,5 Nm	224.2004
154 ... 170	Stud M5x184 ETG 88 black	5,5 Nm	224.2005
166 ... 181	Stud M5x195 ETG 88 black	5,5 Nm	224.2011
173 ... 188	Stud M5x202 ETG 88 black	5,5 Nm	224.2006
184 ... 200	Stud M5x214 ETG 88 black	5,5 Nm	224.2007
196 ... 212	Stud M5x226 ETG 88 black	5,5 Nm	224.2008
208 ... 223	Stud M5x237 ETG 88 black	5,5 Nm	224.2028
219 ... 234	Stud M5x248 ETG 88 black	5,5 Nm	224.2026
227 ... 242	Stud M5x256 ETG 88 black	5,5 Nm	224.2020
238 ... 254	Stud M5x268 ETG 88 black	5,5 Nm	224.2009
246 ... 261	Stud M5x275 ETG 88 black	5,5 Nm	224.2032
251 ... 266	Stud M5x280 ETG 88 black	5,5 Nm	224.2030
261 ... 276	Stud M5x290 ETG 88 black	5,5 Nm	224.2022
271 ... 286	Stud M5x300 ETG 88 black	5,5 Nm	224.2031
281 ... 296	Stud M5x310 ETG 88 black	5,5 Nm	224.2010
292 ... 307	Stud M5x321 ETG 88 black	5,5 Nm	224.2029
305 ... 320	Stud M5x334 ETG 88 black	5,5 Nm	224.2052

Effective stack length = Length between head of screw and top of base plate