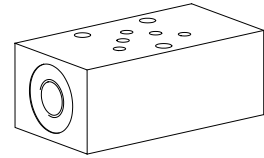
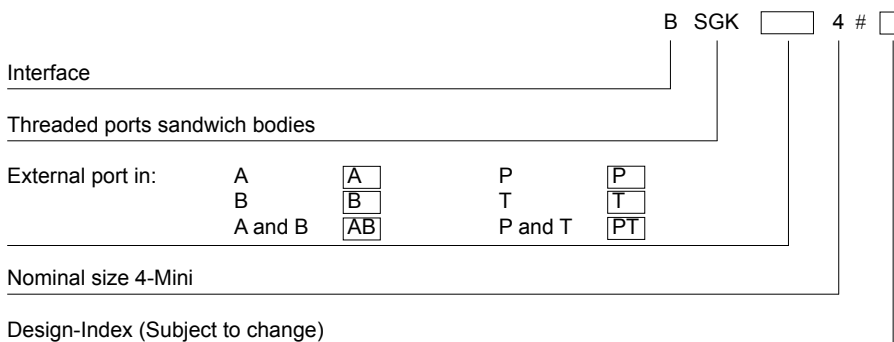
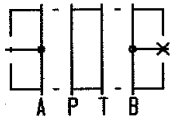
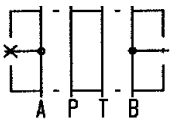
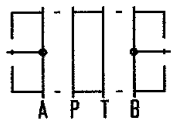
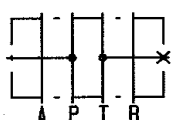
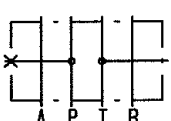
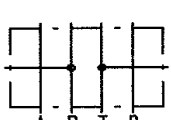


Threaded ports sandwich body
 • $p_{max} = 350 \text{ bar}$
NG4-Mini[®]

DESCRIPTION

Sandwich bodies NG4-Mini according to Wandfluh standard with ports G1/4" for external connection to A and B or P and T lines. Sandwich bodies with one external connection (A, B, P, T) will have the second port plugged with plug G1/4" (article 238.2406). The sandwich bodies are phosphated and will be supplied inclusive 5 O-rings ID 5,28x1,78 (article no. 160.2052).

APPLICATION

Threaded ports sandwich bodies in stacking systems to connect gauges, sensors or control elements.

TYPE CODE

TYPES

 BSGKA4
 (article 203.1501)

 BSGKB4
 (article 203.1502)

 BSGKAB4
 (article 203.1500)

 BSGKP4
 (article 203.1504)

 BSGKT4
 (article 203.1505)

 BSGKPT4
 (article 203.1503)

DIMENSIONS
