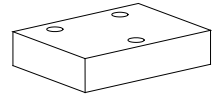


**Blanking plate**  
**Linking plate**  
 •  $p_{max} = 350 \text{ bar}$ 
**NG4-Mini<sup>®</sup>**

**DESCRIPTION**

Blanking and linking plates NG4-Mini acc. to Wandfluh standard. The plates are phosphated and will be supplied inclusive 5 O-rings ID 5,28x1,78 (article 160.2052).

**APPLICATION**

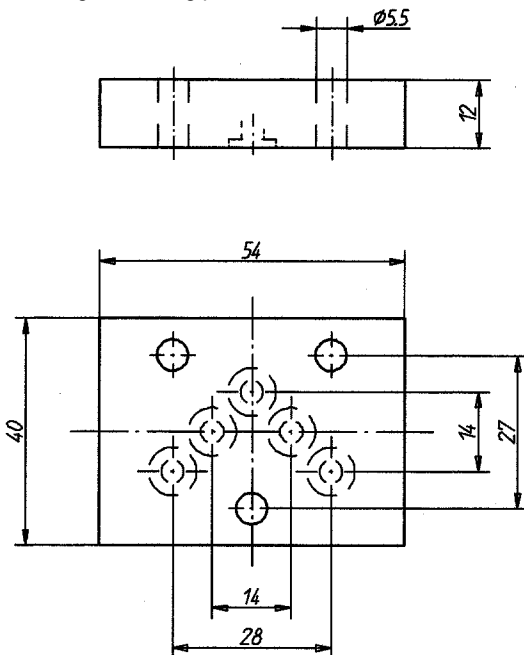
Blanking plates are used to seal all ports (P, A, B, T, T0) of a NG4-Mini interface. With linking plates selected ports of a NG4-Mini interface can be connected. Other ports not in use are sealed.

**TYPE CODE**

Blanking plate	B	BP	4	#	<input type="checkbox"/>
Linking plate	B	U	4 /	#	<input type="checkbox"/>
Interface					
Blanking plate	BP				
Linking plate	U				
Nominal size 4-Mini					
Connection of ports see type code list and symbols					
Design-Index (Subject to change)					

**DIMENSIONS**

Blanking and linking plate


**TYPES**

Types	Article no.	Symbols
<i>Blanking plate:</i>		
BBP4	173.1150	
<i>Linking plate:</i>		
BU4 / P-B / A-T	173.1258	
BU4 / P-A / B-T	173.1250	
BU4 / P-A	173.1251	
BU4 / P-B	173.1252	
BU4 / P-T	173.1253	
BU4 / A-T	173.1254	
BU4 / B-T	173.1255	
BU4 / A-B-T	173.1256	
BU4 / A-B	173.1257	
BU4 / P-A-B	173.1262	