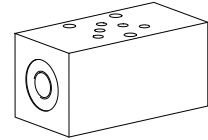


Threaded ports sandwich body

 • $p_{max} = 350 \text{ bar}$
NG3-Mini[®]

DESCRIPTION

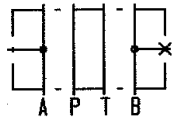
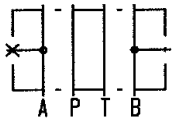
Sandwich bodies NG3-Mini acc. to Wandfluh standard with ports G1/8" for external connection to A and B or P and T lines. Sandwich bodies with one external connection (A, B, P, T) will have the second port plugged with plug G1/8" (article 238.1405). The sandwich bodies are phosphated and will be supplied inclusive 5 O-rings ID 4,50x1,50 (article 160.2045).

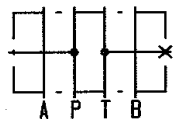
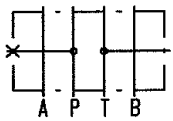
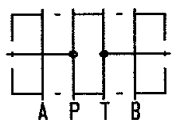
APPLICATION

Threaded ports sandwich bodies in stacking systems to connect gauges, sensors or control elements.

TYPE CODE

		PG	S	A03		#	
Threaded ports sandwich bodies							
Sandwich construction							
Mounting interface NG3-Mini							
External port in:	A	<input type="checkbox"/>					
	B	<input type="checkbox"/>					
	A and B	<input type="checkbox"/>					
	P	<input type="checkbox"/>					
	T	<input type="checkbox"/>					
	P and T	<input type="checkbox"/>					
Design-Index (Subject to change)							

TYPES

 PGSA03-A
 (article 203.0501)

 PGSA03-B
 (article 203.0502)

 PGSA03-AB
 (article 203.0500)

 PGSA03-P
 (article 203.0504)

 PGSA03-T
 (article 203.0505)

 PGSA03-PT
 (article 203.0503)

DIMENSIONS
