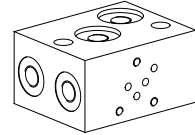


Module type manifold blocks

 • $p_{max} = 350 \text{ bar}$
NG3-Mini[®]

DESCRIPTION

Module type manifold blocks with interface NG3-Mini acc. to Wandfluh standard. The drilling pattern is identical with NG4-Mini. This allows direct combination with the NG4-Mini module type manifold blocks. Using an adapter plate and connecting blocks, combinations with NG6 and NG10 are also possible (see also data sheet 2.9-80). The module type manifold blocks are made from aluminium and are therefore very light.

FUNCTION

The module type manifold blocks are available with 3 different basic circuits, namely parallel, serial and pressure reduction circuit.

APPLICATION

This block system can be used as a replacement for expensive special blocks. Existing systems may be extended or reduced by adding or removing modular blocks.

CONTENT

GENERAL SPECIFICATIONS.....	1
HYDRAULIC SPECIFICATIONS	1
SYMBOLS	1
DIMENSIONS.....	2
PARTS LIST	2
ACCESSORIES.....	2

TYPE CODE

Module type manifold	AL	<input type="checkbox"/>	A03	#	<input type="checkbox"/>
Parallel circuit	<input type="checkbox"/>	P			
Serial circuit	<input type="checkbox"/>	S			
Pressure reduction circuit	<input type="checkbox"/>	D			
Mounting interface NG3-Mini					
Design-Index (Subject to change)					

GENERAL SPECIFICATIONS

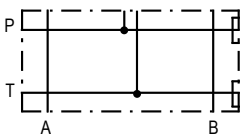
Description	Parallel-, serial- and pressure reduction circuit
Nominal size	NG3-Mini acc. to Wandfluh standard
Fastening	see data sheet 2.9-122
Connection	Threaded connections A, B, P, T, G1/8"
Mounting position	any
Weight	m = 0,26 kg

HYDRAULIC SPECIFICATIONS

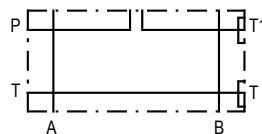
Working pressure $p_{max} = 350 \text{ bar}$

SYMBOLS

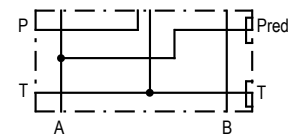
Block for parallel circuit
ALPA03



Block for serial circuit
ALSA03

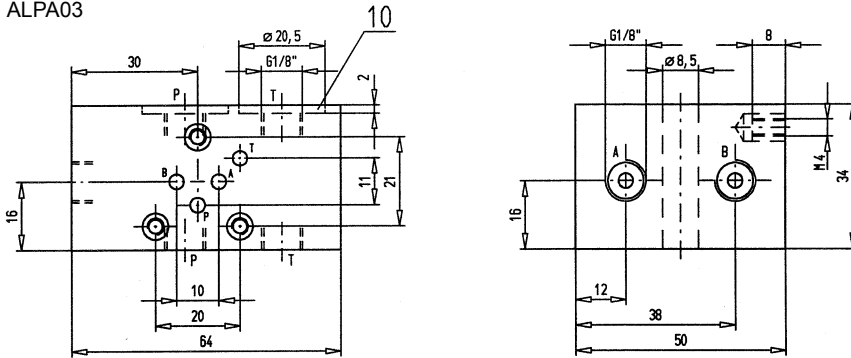


Block for pressure reduction circuit
ALDA03

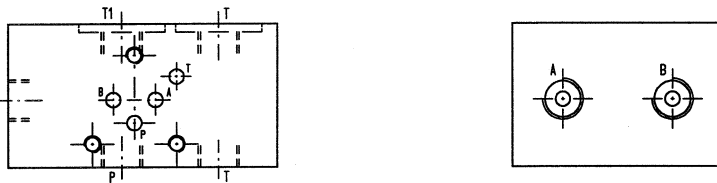


DIMENSIONS

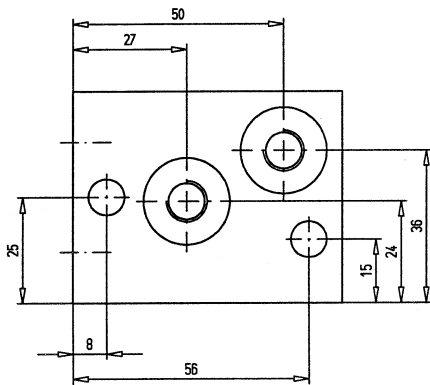
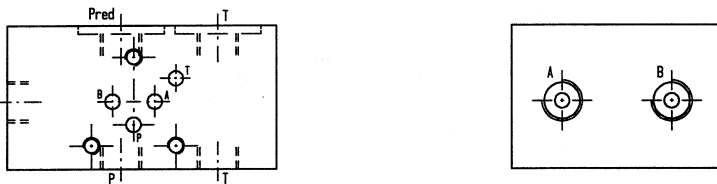
Block for parallel circuit
ALPA03



Block for serial circuit
ALSA03



Block for pressure reduction circuit
ALDA03



PARTS LIST

Position	Article	Description
10	160.2155	O-ring ID 15,54x2,62

ACCESSORIES

Fixing brackets BB41/BB42 and studs
see data sheet 2.9-122