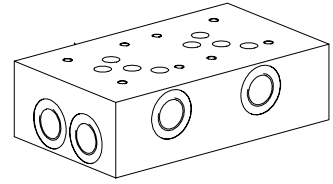


Multi-station subplate

- Threaded connection G1/2"
- $p_{max} = 350 \text{ bar}$

NG10
 ISO 4401-05

DESCRIPTION

Multi-station subplates with interfaces for 2 to 6 valves NG10 acc. to ISO 4401-05. The multi-station subplates are made from phosphated steel.

TYPE CODE

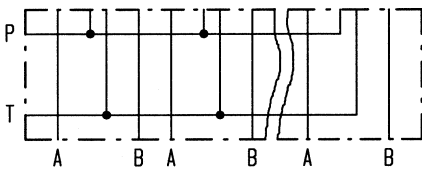
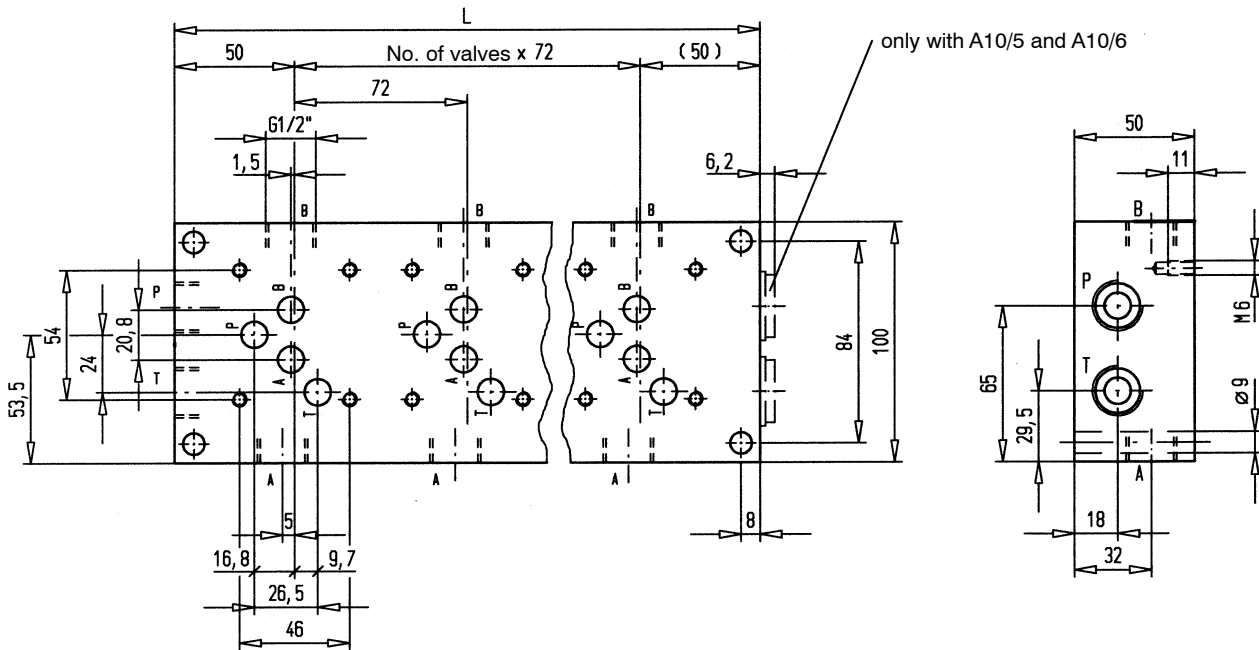
	A	10	/	<input type="checkbox"/>	#	<input type="checkbox"/>
International interface ISO						
Nominal size 10						
Number of valves						
Design-Index (Subject to change)						

GENERAL CHARACTERISTICS

Designation	Multi-station subplate
Nominal size	NG10 selon ISO 4401-05
Fastening	4 location holes for cylinder screw M8
Connection	Threaded connections A, B, P, T G1/2"
Mounting position	any
Weight	see chart

HYDRAULIC SPECIFICATIONS

Working pressure	$p_{max} = 350 \text{ bar}$
------------------	-----------------------------

SYMBOL

DIMENSIONS


Type	No. of valves	Dimension L	Weight m
A10/2	2	172	5,80 kg
A10/3	3	244	8,30 kg
A10/4	4	316	10,80 kg
A10/5	5	388	13,40 kg
A10/6	6	460	15,90 kg