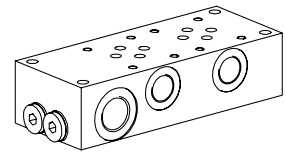


**Multi-station subplate**

- Threaded connection **P and T G1/2"**  
**A and B G3/8"**
- $p_{max} = 350 \text{ bar}$

**NG6**  
ISO 4401-03


**DESCRIPTION**

Multi-station subplates with interfaces for 2 to 7 valves NG6 acc. to ISO 4401-03. The multi-station subplates are made from phosphated steel.

**TYPE CODE**

International interface ISO	A	6	/	<input type="checkbox"/>	#	<input type="checkbox"/>
Nominal size 6						
Number of valves						
Design-Index (Subject to change)						

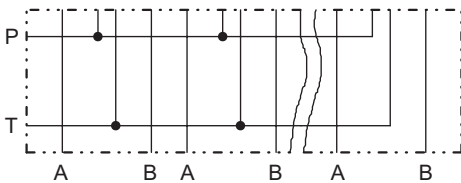
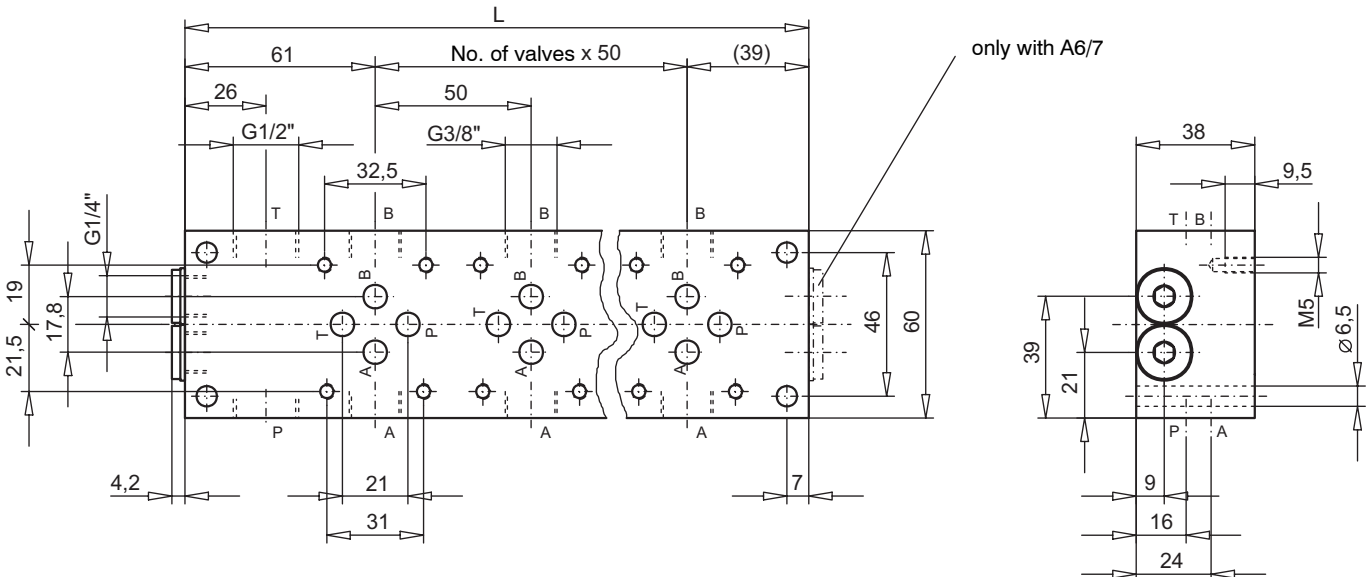
**GENERAL CHARACTERISTICS**

Designation Multi-station subplate  
 Nominal size NG6 acc. to ISO 4401-03  
 Fastening 4 location holes for cylinder screw M6  
 Connection Threaded connections P and T G1/2"  
 A and B G3/8"

**HYDRAULIC SPECIFICATIONS**

Working pressure  $p_{max} = 350 \text{ bar}$

Mounting position any  
 Weight see chart

**SYMBOL**

**DIMENSIONS**


Type	No. of valves	Dimension L	Weight m
A6/2	2	150	2,00 kg
A6/3	3	200	2,65 kg
A6/4	4	250	3,30 kg
A6/5	5	300	3,95 kg
A6/6	6	350	4,60 kg
A6/7	7	400	5,30 kg