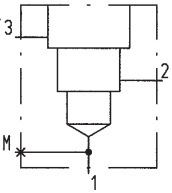
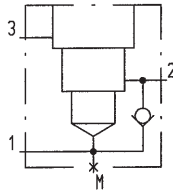


- Line mount body**
- for 3-way-valves in screw-in cartridge construction
 - $p_{max} = 400 \text{ bar}$

M18x1,5
M22x1,5
M33x2

VARIATIONS
Types
F04

G04

TYPE CODE

Line mount body made of steel

Port size

G1/4"

 G14

G3/8"

 G38

G1/2"

 G12

G3/4"

 G34

Cavity thread size

M18x1,5

 18

only G1/4" and G3/8"

M22x1,5

 22

only G3/8" and G1/2"

M33x2

 33

only G3/4"

Variations/Types

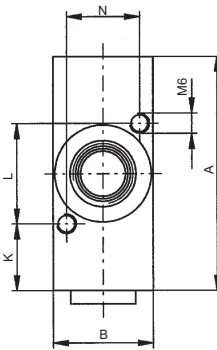
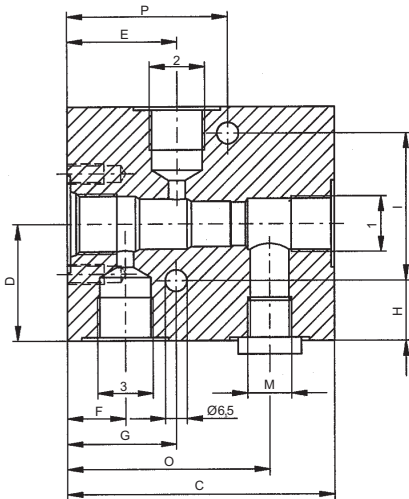
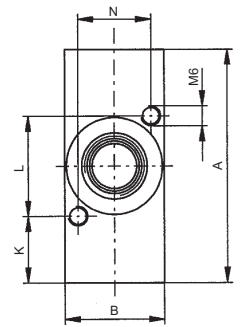
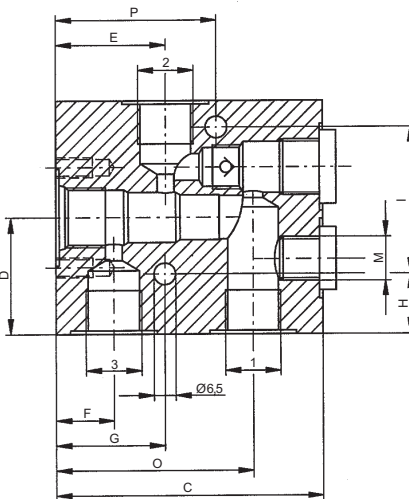
 F04

 F04

 G04

 G04

Design index (subject to change)

 KG - #
DIMENSIONS F04

DIMENSIONS G04

TYPE F04

Ordering code	Size	Ports				Dimensions (in mm)														Weight
		1	2	3	M	A	B	C	D	E	F	G	H	I	K	L	N	O	P	
KGG1418-F04	M18x1,5	G1/4"	G1/4"	G1/4"	G1/4"	70	30	80	35	32.8	17.3	32.5	18	44	20	30	22	60.5	48	1.10
KGG3818-F04	M18x1,5	G3/8"	G3/8"	G3/8"	G1/4"	70	30	80	35	32.8	17.3	32.5	18	44	20	30	22	60.5	48	1.10
KGG3822-F04	M22x1,5	G3/8"	G3/8"	G3/8"	G1/4"	80	45	100	40	44	22.5	55	11	58	25	30	32	77	25	2.45
KGG1222-F04	M22x1,5	G1/2"	G1/2"	G1/2"	G1/4"	80	45	100	40	44	22.5	55	11	58	25	30	32	77	25	2.45
KGG3433-F04	M33x2	G3/4"	G3/4"	G3/4"	G1/4"	100	50	110	50	58.5	30.5	70	11	80	27.5	45	34	89.5	35	3.40

TYPE G04
 Recommended product range

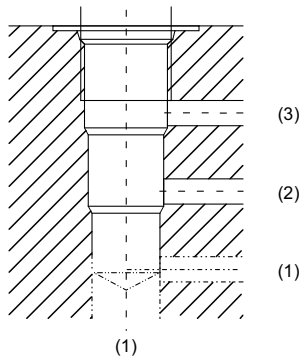
Ordering code	Size	Ports				Dimensions (in mm)														Weight	
		1	2	3	M	A	B	C	D	E	F	G	H	I	K	L	N	O	P		Q
KGG1418-G04	M18x1,5	G1/4"	G1/4"	G1/4"	G1/4"	70	30	80	35	32.8	17.3	32.5	18	44	20	30	22	59	48	22.5	1.10
KGG3818-G04	M18x1,5	G3/8"	G3/8"	G3/8"	G1/4"	70	30	80	35	32.8	17.3	32.5	18	44	20	30	22	59	48	22.5	1.10
KGG3822-G04	M22x1,5	G3/8"	G3/8"	G3/8"	G1/4"	80	45	100	40	44	22.5	55	11	58	25	30	32	76	25	26.5	2.40
KGG1222-G04	M22x1,5	G1/2"	G1/2"	G1/2"	G1/4"	80	45	100	40	44	22.5	55	11	58	25	30	32	76	25	26.5	2.40
KGG3433-G04	M33x2	G3/4"	G3/4"	G3/4"	G1/4"	100	50	125	50	58.5	30.5	70	11	80	27.5	45	34	100	35	33	4.25

GENERAL SPECIFICATIONS

Description	Line mount body
Mounting	2 location holes 2 tapped holes
Connection	Threated connections
Mounting position	see valve data sheet

HYDRAULC SPECIFICATIONS

Peak pressure	$p_{max} = 400 \text{ bar}$
---------------	-----------------------------

CARTRIDGE CAVITY


Type	Cavity according to:	For detailed cavity drawing see data sheet:
M18x1,5	WAG-Norm	2.13-1020
M22x1,5	ISO 7789-22-04-0-98	2.13-1004
M33x2	ISO 7789-33-04-0-98	2.13-1040

SCREW-IN CARTRIDGES INSTALLED

According to the type the following screw-in cartridges can be installed in the line mount bodies:

Type	Data sheet no.
M18x1,5	
SDSPM18-FG	1.11-2050
MV.PM18	2.2-510
MVPPM18	2.3-610
M22x1,5	
SDSPM22-FG	1.11-2060
SDXPM22-FG	1.11-2062
SDYPM22-FG	1.11-2063/2064
MV.PM22	2.2-530
MVEPM22	2.2-536
MVPPM22	2.3-630/629
MVVPM22	2.3-631
MVCPM22	2.3-634
MQPPM22	2.3-640/641
MQVPM22	2.3-642
QD.PM22	2.5-540
QDPPM22	2.6-645/644
QDVPM22	2.6-646
M33x2	
MVPPM33	2.3-650/649
MVVPM33	2.3-651
QD.PM33	2.5-555
QDPPM33	2.6-665/666
QDVPM33	2.6-667


CAUTION!

The performance data refer to the screw-in cartridges only. The additional pressure drop in the line mount body must be taken into consideration.

Technical explanation see data sheet 1.0-100E