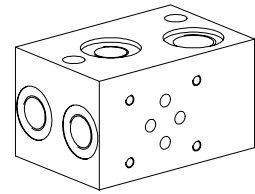


**Module type manifold blocks**

 •  $p_{max} = 350 \text{ bar}$ 
**NG6**  
 ISO 4401-03

**DESCRIPTION**

Module type manifold blocks with interface NG6 acc. to ISO 4401-03. Using an adapter plate and connecting blocks, combinations with NG3-Mini, NG4-Mini and NG10 are also possible (see also data sheet 2.9-80). The module type manifold blocks are made from steel and are phosphated.

**FUNCTION**

The module type manifold blocks are available with 3 different basic circuits, namely parallel, serial and pressure reduction circuit.

**APPLICATION**

This block system can be used as a replacement for expensive special blocks. Existing systems may be extended or reduced by adding as removing modular blocks.

**CONTENT**

GENERAL SPECIFICATIONS .....	1
HYDRAULIC SPECIFICATIONS .....	1
SYMBOLS .....	1
DIMENSIONS .....	2
PARTS LIST .....	2
ACCESSORIES .....	2

**TYPE CODE**

International interface ISO	A	LV	6	□	#	□
Module type manifold						
Nominal size 6						
Parallel circuit	P					
Serial circuit	S					
Pressure reduction circuit	D					
Design-Index (Subject to change)						

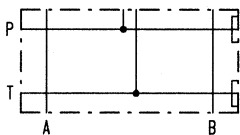
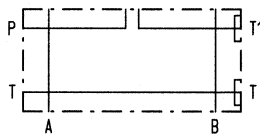
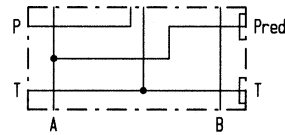
**GENERAL SPECIFICATIONS**

Description	Parallel-, serial- and pressure reduction circuit
Nominal size	NG6 acc. to ISO 4401-03
Fastening	see data sheet 2.9-124
Connection	Threaded connections P, P <sub>red</sub> T1, A, B = G3/8" T = G1/2"
Mounting position	any
Weight:	m = 2,0 kg

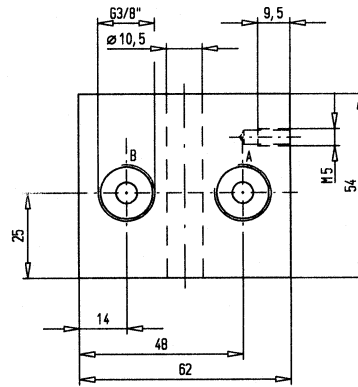
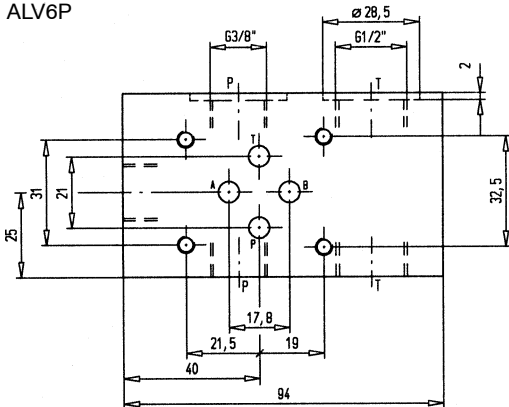
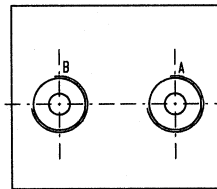
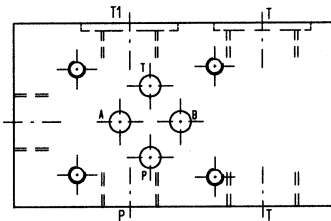
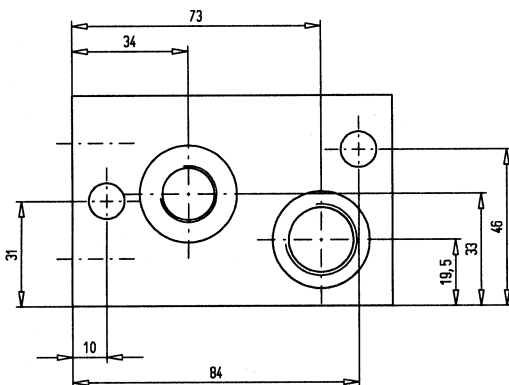
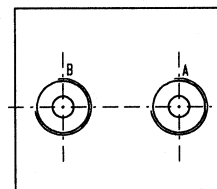
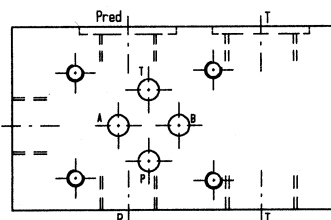
**HYDRAULIC SPECIFICATIONS**

Working pressure	$p_{max} = 350 \text{ bar}$
------------------	-----------------------------

**SYMBOLS**

 Block for parallel circuit  
 ALV6P

 Block for serial circuit  
 ALV6S

 Block for pressure reduction circuit  
 ALV6D


**DIMENSIONS**

 Block for parallel circuit  
 ALV6P

 Block for serial circuit  
 ALV6S

 Block for pressure reduction circuit  
 ALV6D

**PARTS LIST**

Position	Article	Description
10	160.2238	O-ring ID 23,81x2,62

**ACCESSORIES**

 Fixing brackets AB61/AB62 and studs  
 see data sheet 2.9-124