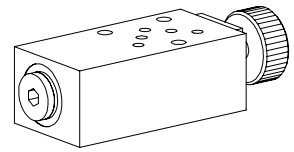


**Drain valve
Sandwich construction**

- $Q_{max} = 25 \text{ l/min}$
- $p_{max} = 350 \text{ bar}$

NG4-Mini[®]

DESCRIPTION

Drain valve NG4-Mini with interface acc. to Wandfluh standard. Sandwich design. Valves for 3 flow directions are available. The sandwich body is made from phosphated steel. The turn knob from anodised aluminium.

FUNCTION

A spherical, hardened closing element seals the pressurised part leak free against tank port. By turning the knob the connection to tank will be opened. Knob may be blocked in any position by a set screw.

APPLICATION

Drain valves are mainly used in systems with an accumulator which need to be depressurised for revisions. Among the benefits from NG 4 Mini sandwich elements are flexibility in system lay-out, small space requirement and low weight.

CONTENT

GENERAL SPECIFICATIONS	1
HYDRAULIC SPECIFICATIONS	1
SYMBOLS / TYPES	1
DIMENSIONS	2
PARTS LIST	2

TYPE CODE

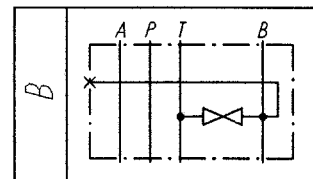
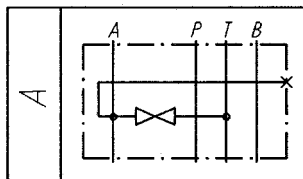
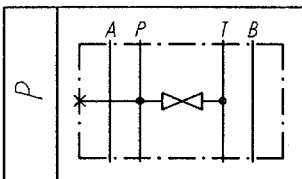
			<input type="checkbox"/>	B	AH	<input type="checkbox"/>	4 /	<input type="checkbox"/>	#	<input type="checkbox"/>
Interface										
Type description for drain valve										
Drain valve:	P → T	<input type="checkbox"/>	P							
	A → T	<input type="checkbox"/>	A							
	B → T	<input type="checkbox"/>	B							
Normal size 4-Mini										
Threaded port open	<input type="checkbox"/>	O								
with plug	<input type="checkbox"/>	V								
with minimess screw coupling	<input type="checkbox"/>	M								
Design-Index (Subject to change)										

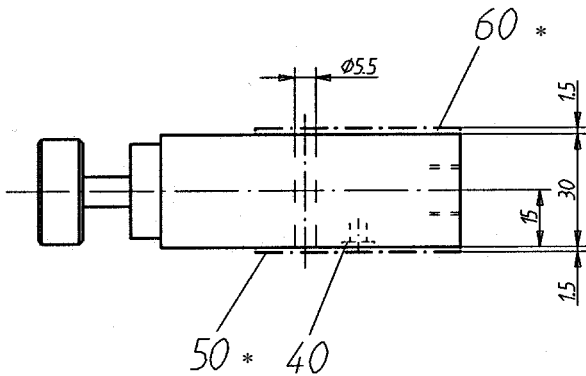
GENERAL SPECIFICATIONS

Description	Drain valve
Nominal size	NG4-Mini acc. to Wandfluh standard
Construction	Sandwich construction
Mounting	3 holes for hexagon socket screw M5 or studs M5
Connections	Connection plates Multistation flange subplate Longitudinal stacking system
Ambient temperature	-20...+50°C
Mounting position	any
Fastening torque	$M_D = 5,5 \text{ Nm}$ (Quality 8.8)
Weight	$m = 0,75 \text{ kg}$

HYDRAULIC SPECIFICATIONS

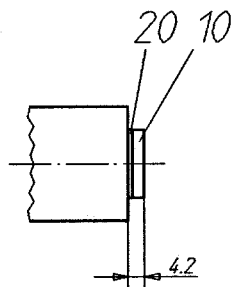
Fluid	Mineral oil, other fluid on request
Contamination efficiency	ISO 4406:1999, class 20/18/14 (Required filtration grade $\beta_{10...16} \geq 75$) refer to data sheet 1.0-50/2
Viscosity range	12 mm ² /s...320 mm ² /s
Fluid temperature	-20...+70°C
Peak pressure in ports A, B, P	$p_{max} = 350 \text{ bar}$
Peak pressure port T	$p_{max} = 50 \text{ bar}$
Max. volume flow	$Q_{max} = 25 \text{ l/min}$

SYMBOLS / TYPES


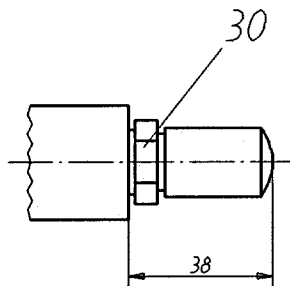
DIMENSIONS


* only BAHB4/ .

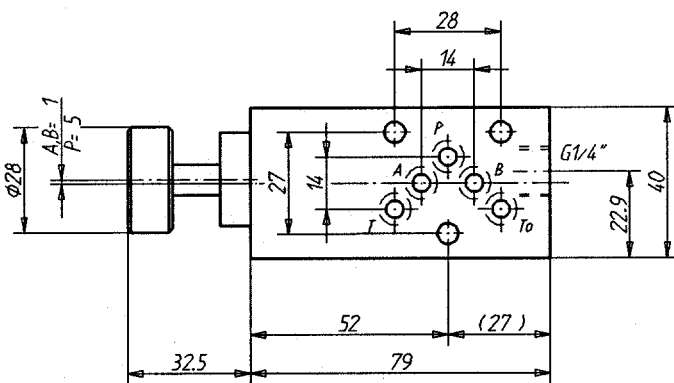
BAH.4/O



BAH.4/V



BAH.4/M



On types BAHB, P4 the adjustment is located on B-side

PARTS LIST

Position	Article	Description
10	238.2204	Plug DIN 908 G1/4"
20	49.1140	Cop. seal ring NG 14x18x1,5 DIN 7603
30	152.9101	Mini-mess fitting 1620/1/4"
40	160.2052	O-ring ID 5,28x1,78
50	173.1700	Intermediate plate BZB4
60	173.1650	Sealing plate BDB4

Technical explanation see data sheet 1.0-100E