

ELECTRICAL SPECIFICATIONS

Construction	Proportional solenoid, wet pin push type, pressure tight	
Standard nominal voltage	U = 12 VDC	U = 24 VDC
Limiting current	I _G = 1320 mA	I _G = 660 mA
Relative duty factor	100 % ED/DF (see data sheet 1.1-430)	
Protection class acc. to EN 60 529	Connection version D: IP65 J: IP66 G: IP67 and 69K	

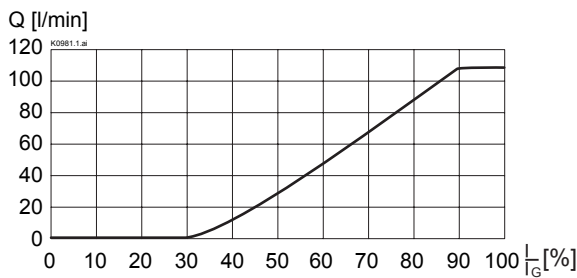
For further electrical specifications see data sheet 1.1-173 (W)
1.1-174 (M)

HYDRAULIC SPECIFICATIONS

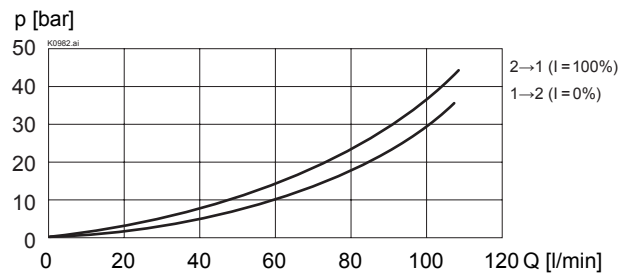
Fluid	Mineral oil, other fluid on request
Contamination efficiency	ISO 4406:1999, class 18/16/13 (Required filtration grade $\beta_{6...10} \geq 75$) see data sheet 1.0-50/2
Viscosity range	12 mm ² /s...320 mm ² /s
Fluid temperature	-20...+70 °C
Peak pressure	p _{max} = 350 bar
Max. Volume flow	see characteristics
Min. pressure drop	see characteristics
Leakage volume flow	see characteristics
Hysteresis	≤ 5% * bei 100 bar * bei optimalem Dithersignal

CHARACTERISTICS Oil viscosity $\nu = 30 \text{ mm}^2/\text{s}$

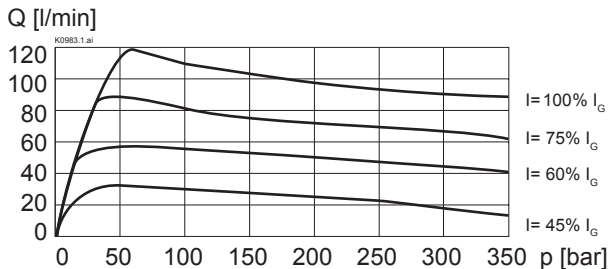
Q = f (I) Volume flow adjustment characteristics ($\Delta p = 100 \text{ bar}$)



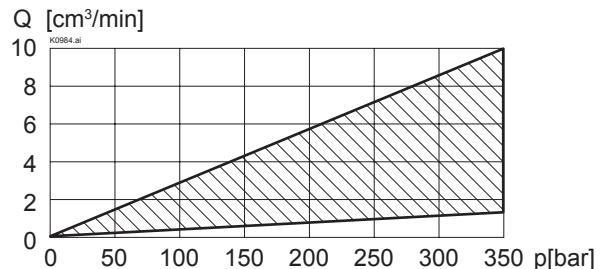
$\Delta p = f (Q)$ Pressure drop-volume flow curve

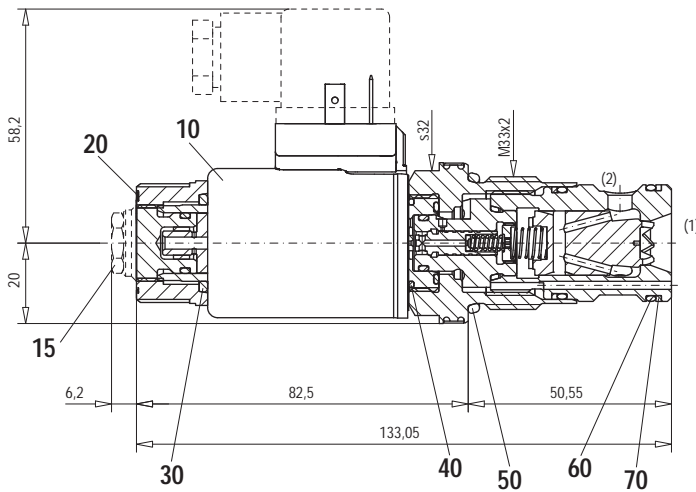
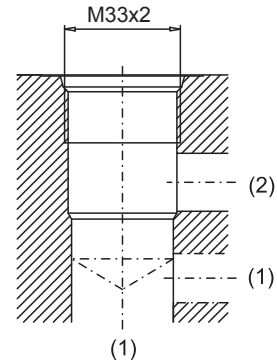


Q = f (p) Pressure drop-volume flow characteristics



Q_L = f (p) Leakage volume flow curve



DIMENSIONS / SECTIONAL DRAWINGS

 Cavity drawing acc. to
 ISO 7789-33-01-0-98

 For detailed cavity drawing and
 cavity tools see data sheet 2.13-1005

Dimensions of the other connection versions see data sheet 1.1-173

PARTS LIST

Position	Article	Description
10	206.2201	EN 175301 Solenoid coil WD37/19x50-G24
	206.2200	Solenoid coil WD37/19x50-G12
		Junior-Timer
	206.2203	Solenoid coil WJ37/19x50-G24
	206.2202	Solenoid coil WJ37/19x50-G12
		Deutsch
206.2205		Solenoid coil WG37/19x50-G24
	206.2204	Solenoid coil WG37/19x50-G12
15	253.8000	HB 4,5 Manual override (data sheet 1.1-300)
	239.2033	HB 0 Plug screw (data sheet 1.1-300)
20	154.2700	Knurled nut
30	160.2187	O-ring ID 18,72x2,62 (NBR)
	160.6187	O-ring ID 18,72x2,62 (FKM)
40	160.2170	O-ring ID 17,17x1,78 (NBR)
	160.6172	O-ring ID 17,17x1,78 (FKM)
50	160.2298	O-ring ID 29,82x2,62 (NBR)
	160.8298	O-ring ID 29,82x2,62 (FKM)
60	160.2252	O-ring ID 25,12x1,78 (NBR)
	160.8252	O-ring ID 25,12x1,78 (FKM)
70	049.3296	Backup ring RD 26,1x29x1,4

ACCESSORIES

Flange and sandwich bodies	Register 2.6
Line mount body	Data sheet 2.9-205
Proportional amplifier	Register 1.13
Mating connector EN 175301-803	Article no. 219.2002

Technical explanation see data sheet 1.0-100