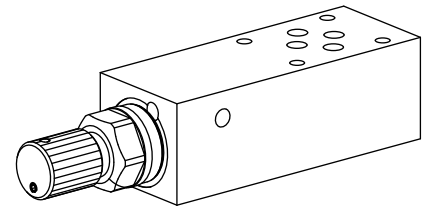


**3-way flow control valve**  
**Flange- and sandwich construction**

- $Q_{max}$  = 42 l/min
- $Q_{Nmax}$  = 40 l/min
- $p_{max}$  = 350 bar

**NG6**  
 ISO 4401-03

**DESCRIPTION**

Direct operated, pressure compensated flow control valve in flange- and sandwich construction. Flow control screw-in cartridges M22x1,5 acc. to ISO 7789 are installed. The flange body is painted, the sandwich plates and the outside parts are phosphatised. The solenoid is zinc coated.

**FUNCTION**

The 3-way flow control valve is designed to keep the oil flow to any actuator constant irrespective of the load.

**APPLICATION**

3-way flow control valves are used where the supply volume flow has to be kept constant even when the load fluctuates. Depending on the application, a distinction is made between restricting the forward flow or the return flow.

**TYPE CODE**

Flow control valve	Q	D	<input type="checkbox"/>	<input type="checkbox"/>	A06	-	<input type="checkbox"/>	-	<input type="checkbox"/>	#	<input type="checkbox"/>
3-way-construction											
Setting versions: Screw			<input type="checkbox"/>	<input type="checkbox"/>							
Turning knob			<input type="checkbox"/>	<input type="checkbox"/>							
Lock			<input type="checkbox"/>	<input type="checkbox"/>							
Cover			<input type="checkbox"/>	<input type="checkbox"/>							
Flange construction			<input type="checkbox"/>	<input type="checkbox"/>							
Sandwich construction			<input type="checkbox"/>	<input type="checkbox"/>							
International mounting interface ISO, NG6											
Type list/Function:											
Flange, flow control from A to B			<input type="checkbox"/>	<input type="checkbox"/>							
Sandwich, meter-in flow control in P			<input type="checkbox"/>	<input type="checkbox"/>							
Nominal volume flow rates $Q_N$ :	25 l/min	<input type="checkbox"/>	<input type="checkbox"/>	<input type="checkbox"/>							
	40 l/min	<input type="checkbox"/>	<input type="checkbox"/>	<input type="checkbox"/>							
Design-Index (Subject to change)											

**GENERAL SPECIFICATIONS**

Description	3-way flow control valve
Nominal size	NG6 acc. to ISO 4401-03
Construction	Flange- and sandwich construction
Mounting	4 holes for socket cap screws M5 or studs screws M5
Connection	Threaded connection plates Multi-flange subplate Longitudinal stacking system
Ambient temperature	-20...50 °C
Mounting position	any
Fastening torque	$M_D = 5,5$ Nm (Qual. 8.8) for fastening screws $M_D = 50$ Nm for screw-in cartridge
Weight:	• Flange type m = 1,10 kg
(without screw-in cartridge)	• Sandwich type m = 1,30 kg

**HYDRAULIC SPECIFICATIONS**

Fluid	Mineral oil, other fluid on request
Contamination efficiency	ISO 4406:1999, class 18/16/13 (Required filtration grade $\beta_{6...10} \geq 75$ ) see data sheet 1.0-50/2
Viscosity range	12 mm <sup>2</sup> /s...320 mm <sup>2</sup> /s
Fluid temperature	-20...+70 °C
Peak pressure	$p_{max} = 350$ bar
Min. volume flow	$Q_{min} = 0,1$ l/min (at $v = 30$ mm <sup>2</sup> /s)
Max. volume flow	$Q_{max} = 42$ l/min
Control accuracy	≤ 1%

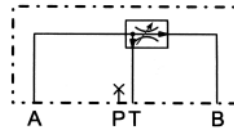
**SCREW-IN CARTRIDGES INSTALLED**

The following screw-in cartridges are used in either the flange body or the sandwich body.

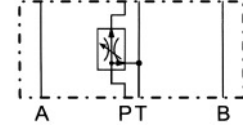
Type	Designation	Data sheet no.
QD.PM22	flow control valve •3-way	2.5-555

**TYPE CHARTS**

QD.FA06-A/B



QD.SA06-P


**REMARK!**

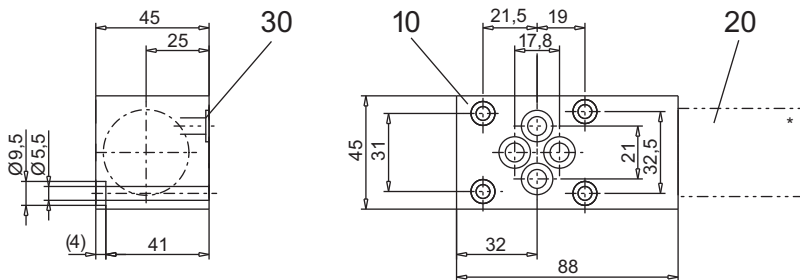
Detailed performance data and additional hydraulic specifications may be drawn from the data sheets of the corresponding installed pressure relief cartridge.


**CAUTION!**

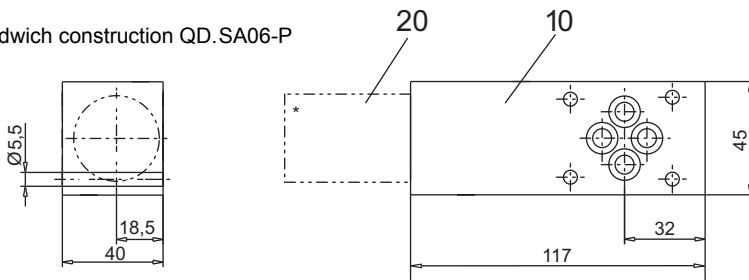
The performance data especially the «**pressure-flow-characteristic**» on the data sheets of the screw-in cartridges refer to the screw-in cartridges only. The additional pressure drop of the flange body respectively sandwich body must be taken into consideration.

**DIMENSIONS**

Flange construction QD.FA06-A/B



Sandwich construction QD.SA06-P



\* The total lengths depends on the cartridge type, see data sheet 2.5-540

**PARTS LIST**

Position	Article	Description
10	134.6208	Flange body
	134.6645	Sandwich plate P
20	633.3...	Flow control cartridge M22x1,5 see data sheet 2.5-540
30	160.2093	O-ring ID 9,25x1,78

Technical explanation see data sheet 1.0-100E