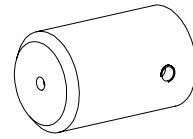


**Cover
for screw-in cartridge M18 and M22
ISO 7789**



DESCRIPTION

The steel cover is zinc plated and therefore corrosion-protected. It is fixed using a radially disposed M4 grub screw. At the face end there is a small bore which, if required, allows the user to insert a wire for lead sealing purpose.

Important:

The necessary transverse bore in the adjusting spindle must be drilled by the customer. We recommend a hole diameter of 2 mm.

FUNCTION

The cover prevents accidental maladjustment and makes unauthorised adjustments of the screw cartridge more difficult. The degree of protection can be increased by the customer by the use of sealing lacquer (M4 grub screw) or by insertion of a sealing wire with lead seal.

Important:

Since the hex. of the cartridges is not covered, the cover does not protect the system from unauthorised removal of the cartridge.

APPLICATIONS

The cover can be fitted to all screw-in cartridge M18 and M22 with „S“ key adjustment. The cover is a very simple alternative for the lock adjuster „K“, but offers less convenience and safety.

TYPE CODE

Insert **A** for control in the type code of screw-in cartridges with tamperproof cover.

e.g. B V **A** PM22-160

DIMENSIONS

