

**Cartridge valve body**

 •  $p_{max} = 350 \text{ bar}$ 
**NG16**
**NG25**
**NG32**
**NG40**

ISO 7368

DIN 24342

**DESCRIPTION**

Valve body with cavity for cartridge (logic element) size NG16, NG25, NG32 and NG40 to ISO 7368 / DIN 24342 (see data sheets 1.12-210, 1.12-220, 1.12-230, 1.12-240). Body surface is phosphated.

**TYPE CODE**

		K	<input type="checkbox"/>	<input type="checkbox"/>	#	<input type="checkbox"/>
Cartridge valve body						
Nominal size:	NG16	<input type="text" value="16"/>				
	NG25	<input type="text" value="25"/>				
	NG32	<input type="text" value="32"/>				
	NG40	<input type="text" value="40"/>				
Port sizes:						
for NG16	G3/8"	<input type="text" value="38"/>				
	G1/2"	<input type="text" value="12"/>				
	G3/4"	<input type="text" value="34"/>				
for NG25	G1"	<input type="text" value="100"/>				
	G1 1/4"	<input type="text" value="114"/>				
	G1 1/2"	<input type="text" value="112"/>				
for NG32 and NG40	G1 1/2"	<input type="text" value="112"/>				
Design-Index (Subject to change)						

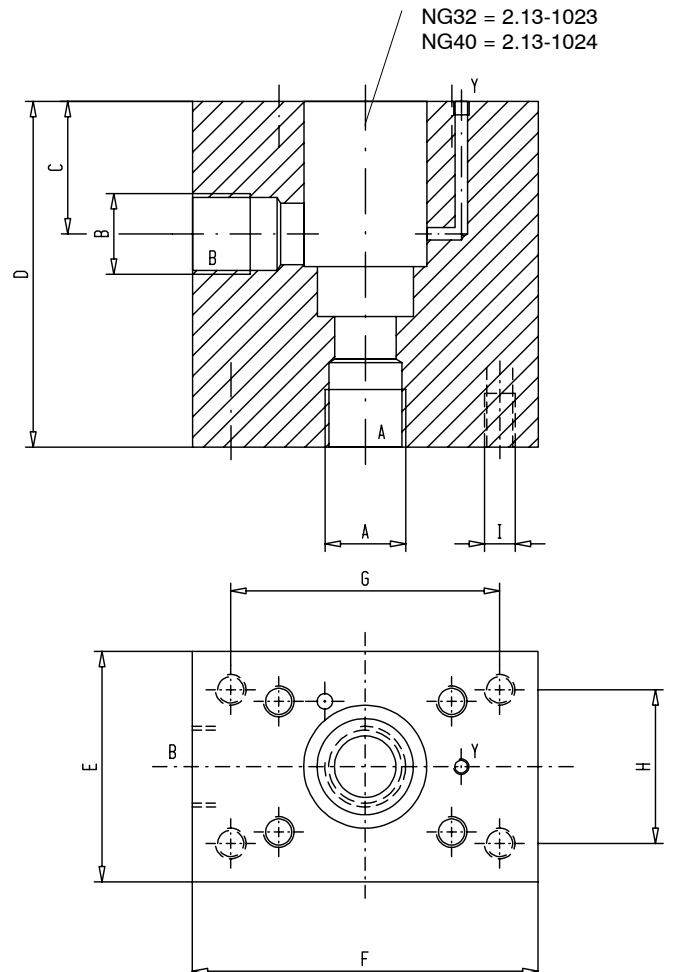
**GENERAL SPECIFICATIONS**

Description	Cartridge valve body
Nominal size	NG16, NG25, NG32, NG40 to ISO 7368 / DIN 24342
Mounting	4 tapped holes for fixation
Weight: NG16	m = 2,6 kg
NG25	m = 8,7 kg
NG32	m = 11,4 kg
NG40	m = 19,1 kg

**HYDRAULIC SPECIFICATIONS**

 Working pressure  $p_{max} = 350 \text{ bar}$ 
**DIMENSIONS**

For detailed cavity drawing see data sheets:

 NG16 = 2.13-1021  
 NG25 = 2.13-1022  
 NG32 = 2.13-1023  
 NG40 = 2.13-1024


Dimensions (in mm)				
	NG16	NG25	NG32	NG40
<b>Port sizes A and B</b>	G3/8" G1/2" G3/4"	G1" G1 1/4" G1 1/2"	G1 1/2"	G1 1/2"
<b>C</b>	30	44	52	64
<b>D</b>	90	125	130	160
<b>E</b>	70	90	105	130
<b>F</b>	70	125	145	160
<b>G</b>	54	105	121	130
<b>H</b>	54	70	81	100
<b>I</b>	M6	M8	M10	M12