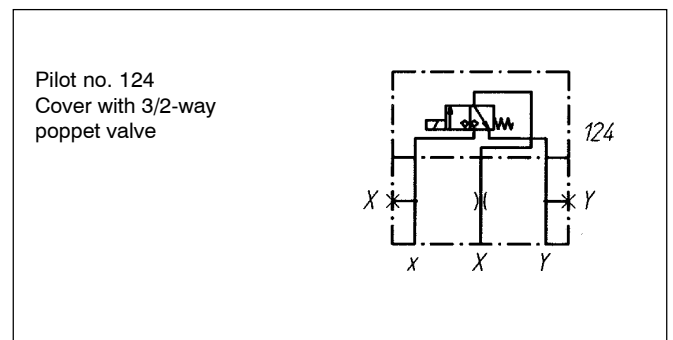
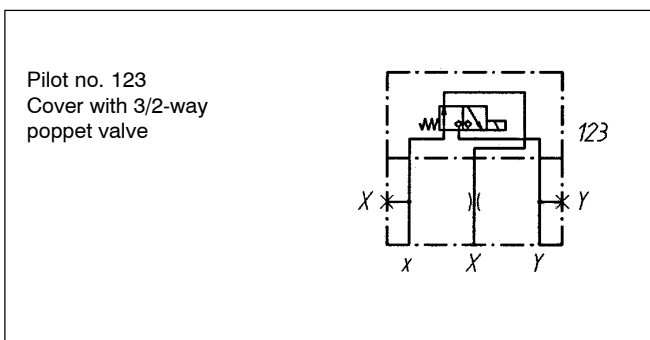
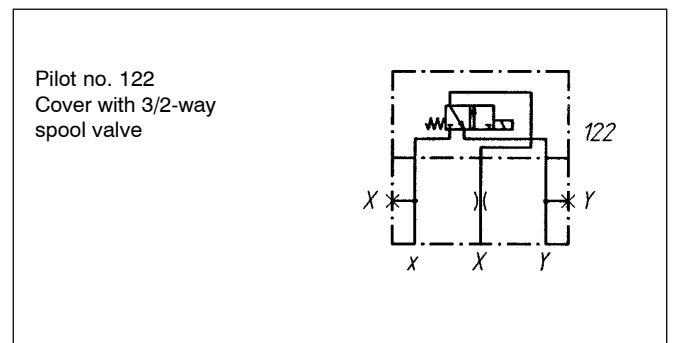
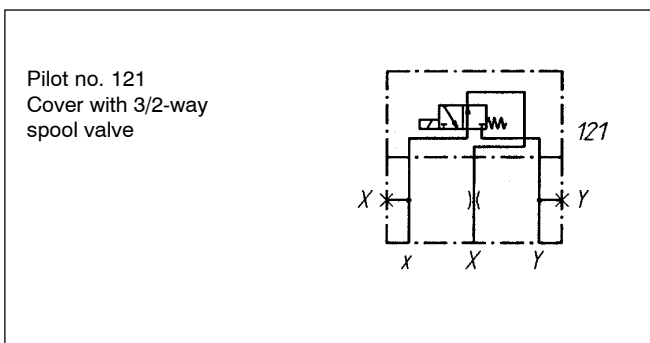
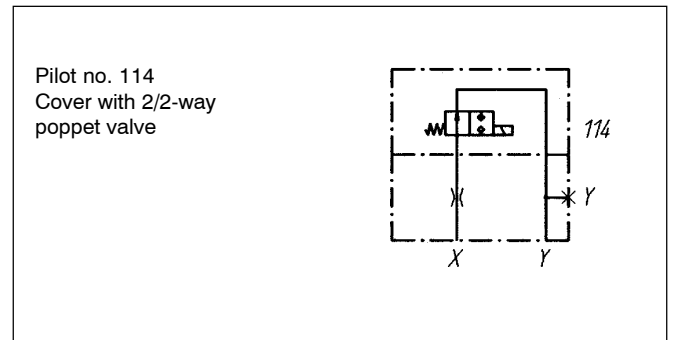
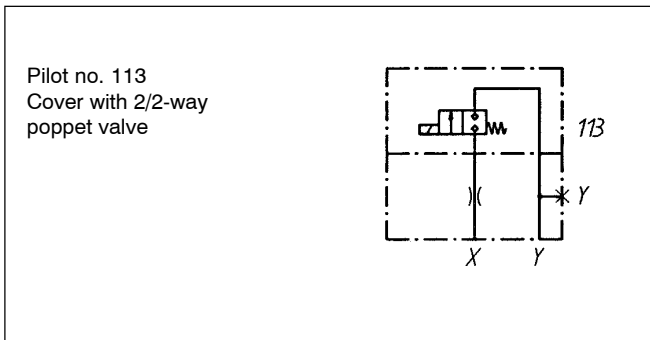
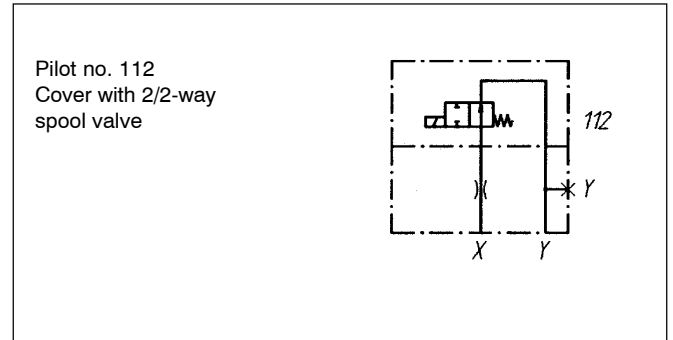
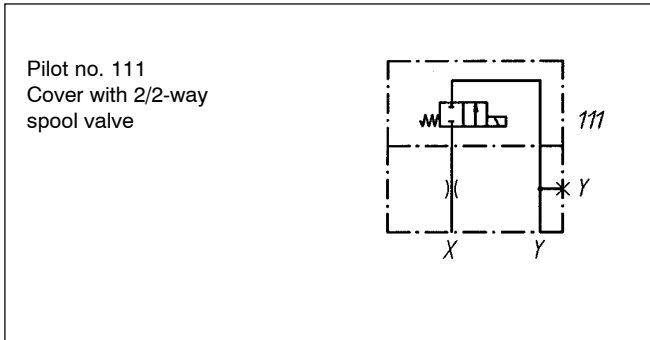


**Control cover
for directional function**

• $p_{max} = 350 \text{ bar}$

NG 25
ISO 7368
DIN 24342



GENERAL SPECIFICATIONS

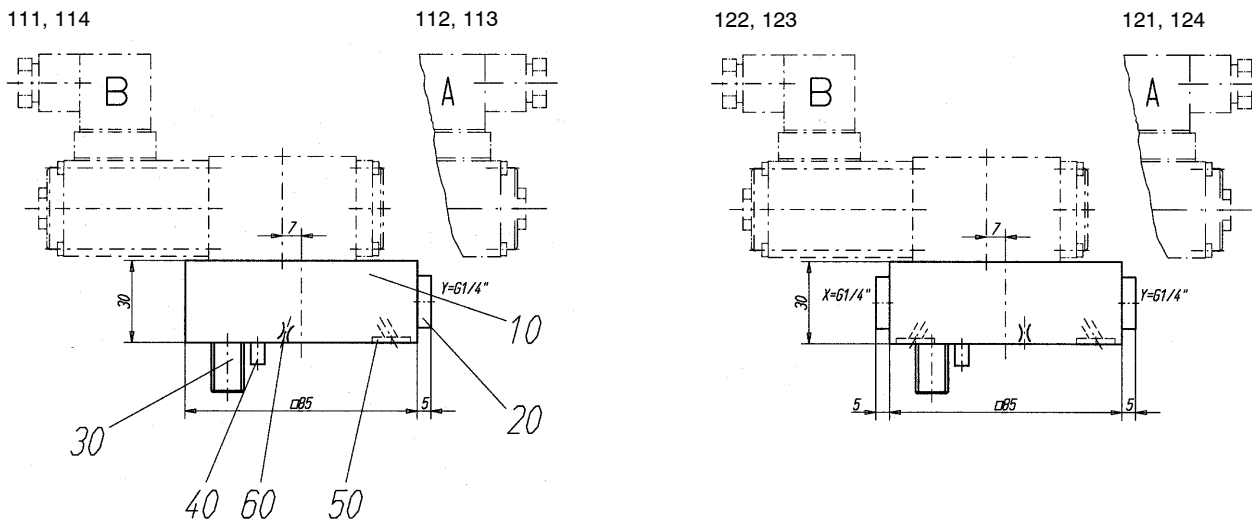
Construction	Control cover for directional function
Mounting position	any
Installation dimension	see dimension to ISO 7368 / DIN 24 342 see data sheet 2.13-1022
Ambient temperature	-20...+50°C
Fastening torque	M _D = 80 Nm (Qual. 8.8) for fixing screw

HYDRAULIC SPECIFICATIONS

Fluid	Mineral oil, other fluid on request
Contamination efficiency	ISO 4406:1999, class 18/16/13 (Required filtration grade β _{6...10} ≥ 75) see data sheet no. 1.0-50/2
Viscosity range	12 mm ² /s bis 320 mm ² /s
Fluid temperature	-20...+70°C
Operation pressure	p _{max} = 350 bar

TYPE CODE

Control cover	D 25		-		/		#		□						
Size	25														
Pilot no.	111...124														
Solenoid type for pilot valve	111, 112, 121, 122, 113, 114, 123, 124,		<table border="1" style="display: inline-table; vertical-align: middle;"> <tr><td>M</td></tr> <tr><td>S</td></tr> </table>		M	S									
M															
S															
Standard nominal voltage U _N	12 VDC	<table border="1" style="display: inline-table; vertical-align: middle;"> <tr><td>G12</td></tr> </table>	G12	110 VAC	<table border="1" style="display: inline-table; vertical-align: middle;"> <tr><td>R110</td></tr> </table>	R110	24 VDC	<table border="1" style="display: inline-table; vertical-align: middle;"> <tr><td>G24</td></tr> </table>	G24	115 VAC	<table border="1" style="display: inline-table; vertical-align: middle;"> <tr><td>R115</td></tr> </table>	R115	230 VAC	<table border="1" style="display: inline-table; vertical-align: middle;"> <tr><td>R230</td></tr> </table>	R230
G12															
R110															
G24															
R115															
R230															
Orifice in cover:	0.6 mm	<table border="1" style="display: inline-table; vertical-align: middle;"> <tr><td>0.6</td></tr> </table>	0.6	1.0 mm	<table border="1" style="display: inline-table; vertical-align: middle;"> <tr><td>1.0</td></tr> </table>	1.0	usw.								
0.6															
1.0															
Omit without orifice															
Design-Index (Subject to change)															

DIMENSIONS

PILOT VALVES

Pilot operated valves:	111, 122	BM4Z40b	Data sheet 1.2-31
	112, 121	BM4Z40a	Data sheet 1.2-31
	113	BS22041a	Data sheet 1.11-2120
	114	BS22040b	Data sheet 1.11-2120
	123	BS32040b	Data sheet 1.11-2120
	124	BS32041a	Data sheet 1.11-2120

PARTS LIST

Position	Article	Description
10	63.1013	Plate to 111, 112, 113, 114
	63.1011	Plate to other types
20	238.2406	Locking screw VSTI G1/4"
30	246.6135	Cylinder screw M12x35 DIN912
40	221.2470	Pin Ø5x16 DIN1481
50	160.2092	O-Ring ID 9,19x2,62
60	118.2007	Orifice M5 / 0,6 x 5
	118.2008	Orifice M5 / 0,7 x 5
	118.2010	Orifice M5 / 0,8 x 5
	118.2011	Orifice M5 / 0,9 x 5
	118.2012	Orifice M5 / 1,0 x 5