

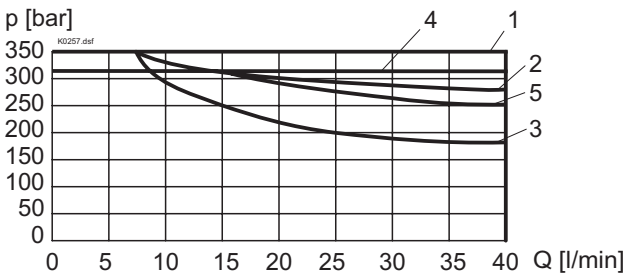
ELECTRICAL CONTROL

Construction Solenoid, wet pin push type, pressure tight
 Standard-nominal voltage $U_N = 12\text{ VDC}, 24\text{ VDC}$
 $U_N = 110\text{ VAC}^*, 115\text{ VAC}^*, 230\text{ VAC}^*$
 $AC = 50\text{ to }60\text{ Hz}$
 * Rectifier integrated in the plug
 Other nominal voltages and nominal performances on request
 Voltage tolerance $\pm 10\%$ of nominal voltage
 Protection class IP 65 to EN 60 529
 Relative duty factor 100% DF (see data sheet 1.1-430)

Switching cycles 15'000/h
 Operating life 10^7 (number of switching cycles, theoretically)
 Connection/Power supply Over device plug connection to ISO 4400/
 DIN 43 650, (2P+E), other connections on request
 Solenoid:
 - Medium SIN45V (1.1-120)
 - Super SIS45V (1.1-125)

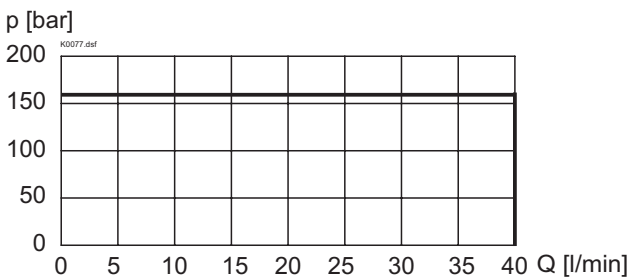
CHARACTERISTICS Oil viscosity $\nu = 30\text{ mm}^2/\text{s}$

$p = f(Q)$ Performance limit by standard voltage at -10 % Super

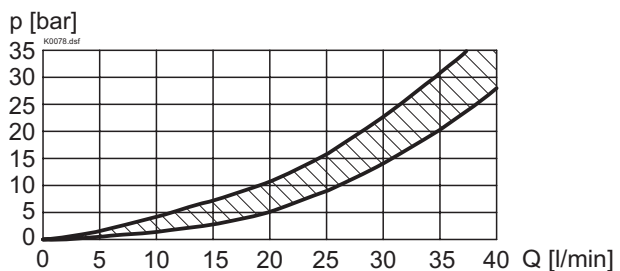


Type	Flow direction	
	1 → 2	2 → 1
ZS22061P	1	2
ZS22061T	1	2
ZS22061A	1	2
ZS22061B	1	2
ZS22061AB	1	2
ZS22060P	1	3
ZS22060T	1	3
ZS22060A	1	3
ZS22060B	1	3
ZS22060AB	4	5

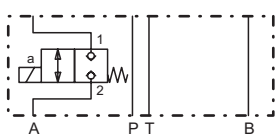
$p = f(Q)$ Performance limit by standard voltage at -10 % Medium



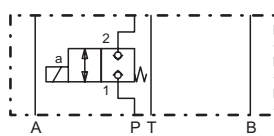
$\Delta p = f(Q)$ Pressure loss/flow characteristics


TYPE CHARTS

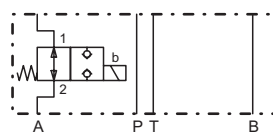
Z.22061A



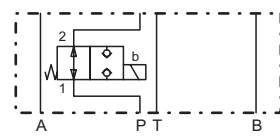
Z.22061P



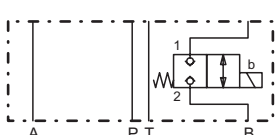
Z.22060A



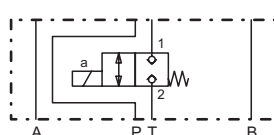
Z.22060P



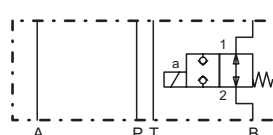
Z.22061B



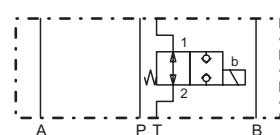
Z.22061T



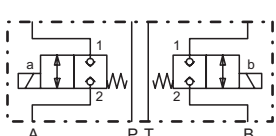
Z.22060B



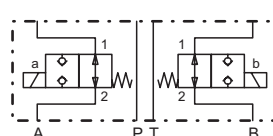
Z.22060T



Z.22061AB

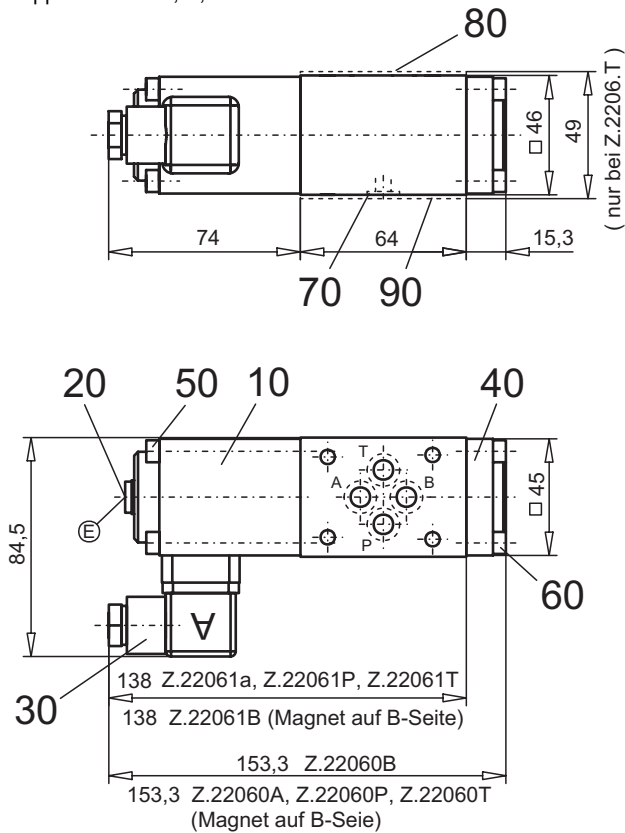


Z.22060AB

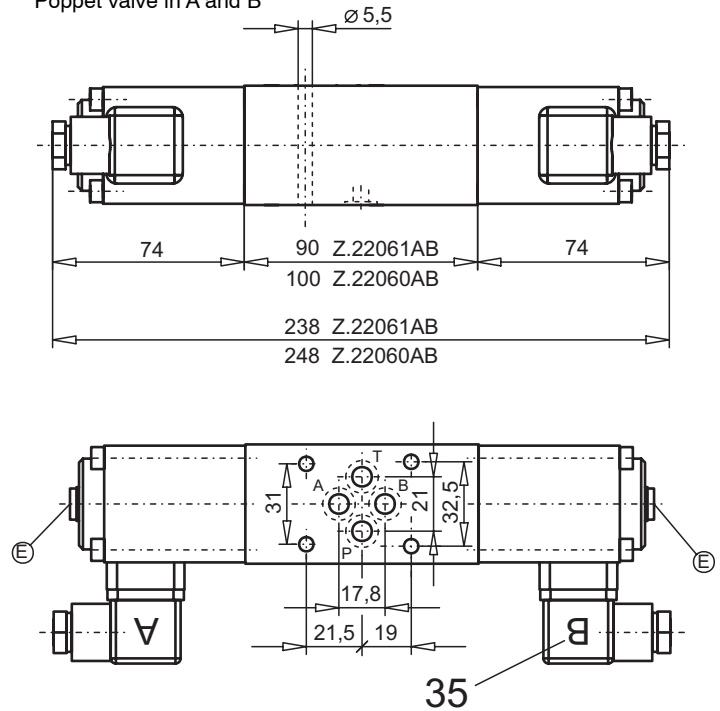


DIMENSIONS

Poppet valve in A, B, P or T



Poppet valve in A and B



E = air bleed screw

PARTS LIST

Position	Article	Description
10	260.6... 260.7...	Medium-solenoid SIN45V Super-solenoid SIS45V
20	239.2033	Plug (incl. seal) HB0
30	219.2001	Plug A (grey)
35	219.2002	Plug B (black)
40	058.4215	Cover
50	246.2160	Socket head cap screw M5x60 DIN 912
60	246.2117	Socket head cap screw M5x16 DIN 912
70	160.2093	O-ring ID 9,25x1,78
80	173.3700	Intermediate plate AZB6 only for Z.2206.T
90	173.3650	Sealing plate ADB6 only for Z.2206.T

ACCESSORIES

 Threaded connection plates, Multi-flange subplates and
 Longitudinal stacking system see Register 2.9

Technical explanation see data sheet 1.0-100E