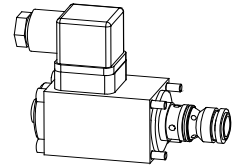


**Solenoid poppet valve cartridge**

- normally open
- $Q_{max} = 15 \text{ l/min}$
- $p_{max} = 250 \text{ bar}$

**NG4**

**DESCRIPTION**

This 2/2-way poppet valve in slip-in cartridge design is mainly used in blocs for hydraulic integrated circuits. Poppet cartridge and spring will be supplied as separate items, if ordered, together with solenoid (VDE standard 0580) and fastening screws.

**Important:** at the time the valve is taken into service, the valve must be vented under pressure (max. 2 revolutions of screw E).

**FUNCTION**

If energised, the pressure proof solenoid presses the poppet auto the seat, acting against a spring. In deenergised state the poppet is lifted off its seat by the spring. One to the pressure balanced design of the poppet-spool no undesired opening as closing forces arise. As a result, oil can flow in both directions through the seating valve. The seat/piston guide is sealed with an O-ring. The seat with a metallic seal closes off the valve so that there is no leakage oil.

**APPLICATION**

Wandfluh poppet valves can be used anywhere absolutely leak tight closing functions are important. Completely sealed loading, gripping and clamping operations are all important functions which Wandfluh poppet valves can perform. Cartridge typ poppet valves can be neatly accommodated in valve blocks. Cavity tools are available for hire or sale for machining aluminium or steel. See data sheet register no. 2.13.

**CONTENT**

GENERAL SPECIFICATIONS.....	1
HYDRAULIC SPECIFICATIONS.....	1
CONTROL ELECTRICAL.....	1
SYMBOLS.....	1
CHARACTERISTICS.....	2
DIMENSIONS.....	2
PARTS LIST.....	2
ACCESSORIES.....	2

**TYPE CODE**

Poppet valve cartridge				2	2	04	0-S1265	#	<input type="checkbox"/>	
Poppet valve cartridge with solenoid				<input type="checkbox"/>	2	2	04	0-S1265 -	#	<input type="checkbox"/>
Medium-solenoid	<input type="checkbox"/>	<input type="checkbox"/>	<input type="checkbox"/>							
Super-solenoid	<input type="checkbox"/>	<input type="checkbox"/>	<input type="checkbox"/>							
2-way (Connections)										
2 Position										
Nominal size 4										
Normally open										
Standard-nominal voltage $U_N$ :	12 VDC	<input type="checkbox"/>	G12	110 VAC	<input type="checkbox"/>	R110				
	24 VDC	<input type="checkbox"/>	G24	115 VAC	<input type="checkbox"/>	R115				
				230 VAC	<input type="checkbox"/>	R230				

Design-Index (Subject to change)

**GENERAL SPECIFICATIONS**

Description	2/2-way poppet valve
Nominal size	NG4
Construction	Direct operated poppet valve
Operations	Solenoid
Mounting	cartridge form
	4 solenoid fixing screws M4
Ambient temperature	-20...+50 °C
Mounting position	any
Fastening torque	$M_D = 2,6 \text{ Nm}$ (quality 8.8)
Weight: 22040-S1265	$m = 0,045 \text{ kg}$
. 22040-S1265- . .	$m = 0,5 \text{ kg}$
Volume flow direction	any

**HYDRAULIC SPECIFICATIONS**

Fluid	Mineral oil, other fluid on request
Contamination efficiency	ISO 4406:1999, class 20/18/14 (Required filtration grade $\beta_{10...16} \geq 75$ ) refer to data sheet 1.0-50/2
Viscosity range	12 mm <sup>2</sup> /s...320 mm <sup>2</sup> /s
Fluid temperature	-20...+70 °C
Working pressure	Medium: $p_{max} = 160 \text{ bar}$ Super: $p_{max} = 250 \text{ bar}$
Max. volume flow	$Q_{max} = 15 \text{ l/min}$ , see characteristics

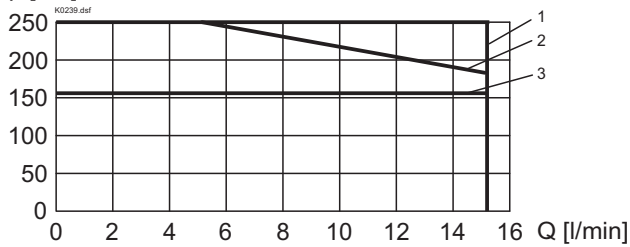
**ELECTRICAL CONTROL**

Construction	Solenoid, wet pin push type, pressure tight
Standard-nominal flow	$U_N = 12 \text{ VDC}, 24 \text{ VDC}$ $U_N = 110 \text{ VAC}^*, 115 \text{ VAC}^*, 230 \text{ VAC}^*$ AC = 50 to 60 Hz * Rectifier integrated in the plug Other nominal voltages and nominal performances on request
Voltage tolerance	±10% of nominal voltage
Protection class	IP 65 to EN 60529
Relative duty factor	100% DF (see data sheet 1.1-430)
Switching cycles	15 000/h
Operating life	$10^7$ (number of switching cycles, theoretically)
Connections/Power supply	Over device plug connection to ISO 4400/DIN 43 650, (2P+E), other connections on request
Solenoid:	- Medium SIN35V (data sheet 1.1-105) - Super SIS35V (data sheet 1.1-110)

**SYMBOLS**

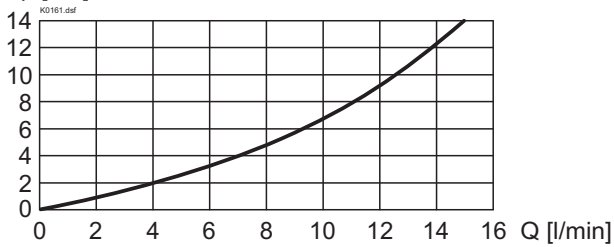
22040-S1265	. 22040-S1265- . .
	

**CHARACTERISTICS** Oil viscosity  $\nu = 30 \text{ mm}^2/\text{s}$ 
 $p = f(Q)$  Performance limit at -10%

 $p$  [bar]


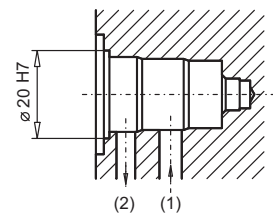
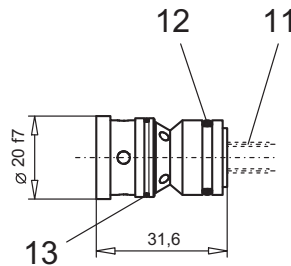
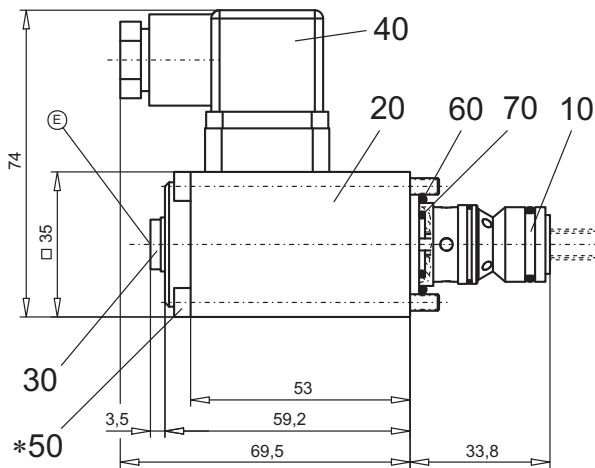
Type	Flow direction	
	1 → 2	2 → 1
M22040-S1265	3	3
S22040-S1265	1	2

 $\Delta p = f(Q)$  Pressure loss / flow characteristics

 $\Delta p$  [bar]

**DIMENSIONS**

. 22040-S1265- . .

22040-S1265



For detailed cavity drawing and cavity tools see data sheet 2.13-1017

E = air bleed screw

**PARTS LIST**

Position	Article	Description
10	500.1005	Poppet valve cart. 22040-S1265 Medium
	500.1006	Poppet valve cart. 22040-S1265 Super
11	053.2101	Spring 1 x 7,4 x 16,5 Medium
	053.2107	Spring 1 x 7,4 x 19,25 Super
12	160.2140	O-ring ID 14,00 x 1,78
13	160.1161	O-ring ID 16,00 x 1,00
20	260.4...	Medium-solenoid SIN35V
	260.5...	Super-solenoid SIS35V
30	239.2033	Plug (incl. seal) HB0
40	219.2002	Plug
50	246.1161	Socket head cap screw M4 x 60 DIN 912
60	160.2204	O-ring ID 20,35 x 1,78
70	160.2120	O-ring ID 12,42 x 1,78

\* Cartridge supplied with fastening screw M4x60 for steel bodies/blocs. For aluminium bodies/blocs longer screws are recommended (min. 2 screw diameter).

**ACCESSORIES**

Cartridge built-in sandwich body:

Sandwich

Register 1.11

Special tool 983.2006 to poppet valve cartridge 22040-S1265

Technical explanation see data sheet 1.0-100